

## NOTICE OF MEETING

# Cabinet Member Signing

Thursday, 7th November 2023, 3.30 pm - Podium South , River Park House 225 High Road London N22 8H (watch the live meeting [Here](#))

**Cabinet member:** Adam Jogee

**Quorum:** 1

### 1. **FILMING AT MEETINGS**

Please note that this meeting may be filmed or recorded by the Council for live or subsequent broadcast via the Council's internet site or by anyone attending the meeting using any communication method. Although we ask members of the public recording, filming or reporting on the meeting not to include the public seating areas, members of the public attending the meeting should be aware that we cannot guarantee that they will not be filmed or recorded by others attending the meeting. Members of the public participating in the meeting (e.g. making deputations, asking questions, making oral protests) should be aware that they are likely to be filmed, recorded or reported on. By entering the meeting room and using the public seating area, you are consenting to being filmed and to the possible use of those images and sound recordings.

The chair of the meeting has the discretion to terminate or suspend filming or recording, if in his or her opinion continuation of the filming, recording or reporting would disrupt or prejudice the proceedings, infringe the rights of any individual or may lead to the breach of a legal obligation by the Council.

### 2. **APOLOGIES FOR ABSENCE**

To receive any apologies for absence.

### 3. **URGENT BUSINESS**

The Chair will consider the admission of any late items of Urgent Business. (Late items of Urgent Business will be considered under the agenda item where they appear. New items of Urgent Business will be dealt with under agenda item 8).

#### **4. DECLARATIONS OF INTEREST**

A member with a disclosable pecuniary interest or a prejudicial interest in a matter who attends a meeting of the authority at which the matter is considered:

- (i) must disclose the interest at the start of the meeting or when the interest becomes apparent, and
- (ii) may not participate in any discussion or vote on the matter and must withdraw from the meeting room.

A member who discloses at a meeting a disclosable pecuniary interest which is not registered in the Register of Members' Interests or the subject of a pending notification must notify the Monitoring Officer of the interest within 28 days of the disclosure.

Disclosable pecuniary interests, personal interests and prejudicial interests are defined at Paragraphs 5-7 and Appendix A of the Members' Code of Conduct

#### **5. DEPUTATIONS/PETITIONS/QUESTIONS**

To consider any requests received in accordance with Part 4, Section B, paragraph 29 of the Council's constitution.

#### **6. PUBLIC SPACE PROTECTION ORDER - FINSBURY PARK SOUTH ENTRANCE (PAGES 1 - 34)**

#### **7. PUBLIC SPACE PROTECTION ORDER - DOVECOTE AVENUE GATES - NOEL PARK WARD (PAGES 35 - 72)**

#### **8. NEW ITEMS OF URGENT BUSINESS**

Bhavya Nair , Principal Committee Co-ordinator  
Tel – 020 8489 1126  
Email: bhavya1.nair@haringey.gov.uk

Fiona Alderman  
Head of Legal & Governance (Monitoring Officer)  
George Meehan House, 294 High Road, Wood Green, N22 8JZ

Wednesday, 29 November 2023

**Report for:** Cabinet Member for Community Safety and Cohesion

**Title:** Finsbury Park South Entrance Public Space Protection Order  
**Report authorised by:** Barry Francis, Director of Environment and Residents Experience

**Lead Officer:** Eubert Malcolm, Assistant Director for Stronger & Safer Communities

**Ward(s) affected:** Harringay Ward

### Report for Key/

**Non-Key Decision:** Non-Key Decision

## 1. Describe the issue under consideration.

- 1.1 The south entrance of Finsbury Park which is situated on Seven Sisters Road, N4 across from Finsbury Post Office and adjacent to Lidl supermarket, has been identified as a hotspot for Crime and ASB (anti-social behaviour) issues. Finsbury Park is bounded by three boroughs Haringey, Islington, and Hackney but the park itself sits inside the ward of Harringay. The specified area is a concern due to its impact on public safety and well-being, particularly with a focus on addressing violence against women and girls (VAWG).
- 1.2 An Environmental Visual Audit was conducted by the MPS under Op Taipan on 07/03/23. (Appendix 2 MPS Crime Prevention Environmental Visual Audit). The audit recommendation highlighted that an effective long-term measure to reduce ASB particularly drug related activity and enhance safety, would be the use of a gating order under a (Public Space Protection Order) PSPO. The PSPO would permit the installation of fencing around the area with the provision of controlled gates to enable the area to be used legitimately and effectively, in particular for deliveries, events and crowd control.
- 1.3 The Cabinet Member for Community Safety and Cohesion is asked to approve consultation for this proposed PSPO to tackle anti-social behaviour.

## 2. Cabinet Member Introduction

N/A

## 3. Recommendations

- 3.1 That the Cabinet Member for Economic Development, Jobs, and Community Cohesion,
  - (i) Approves for consultation the draft Public Space Protection Order (PSPO) as contained in Appendix 1.

(ii) Notes that a further report will be required following the consultation.

## 4. Reasons for decision

4.1 The Council's commitment to creating a safer environment for all residents and visitors is clear in its vision for the borough. To achieve this vision, the Council is proposing the introduction of a Public Space Protection Order (PSPO) to address the ongoing issues of anti-social behaviour (ASB) and criminal activity that are negatively affecting the park's atmosphere and the safety of those who use it.

4.2 The specific area in question is the south entrance of the park on Seven Sisters Road which poses certain challenges due to its design and layout. The main issues which have influenced the decision for the gating PSPO are as follows:

- Layout of the area. The narrow line of sight and the transition from nearby amenities like Lidl into an open space have created an environment where unlawful activities can occur without being easily detected.
- There is a lack of clear ownership or defined rules in the space which contributes to issues, as there are no clear indications of proper usage, including, poor pavement markings, the absence of signage and no clear parking restrictions.
- The environment also allows individuals to conceal themselves around various corners, leading to decreased feelings of safety in the area. This contributes to the misuse of the space for criminal activities and anti-social behaviour.
- The issue is not limited to pedestrian traffic; mopeds parking on the pavement further compounds the problem. While some moped riders might have legitimate reasons for being there, the presence of both legal and illegal users creates an assumption that this practice is acceptable, essentially establishing a "desire line" for mopeds in the area. This becomes a challenge to rectify, even if it negatively impacts the general public. It's also noted that the majority of moped users are pretending to be delivery drivers but are, in fact, involved in facilitating the supply of drugs.

4.3 Closing off the area by erecting gates and implementing the PSPO will bring an end to or restrict the behaviours above and subsequently, bring about improvements to the area such as, an increase in feelings of safety for users of the park in particular women and in addition the area will be put to better, legitimate use.

## 5. Alternative options considered

5.1 Not to pursue a gating order under a PSPO. Given the length of time that the behaviour has been ongoing and the detrimental effect the behaviour is having on our communities and businesses, this is not an option.

## 6. Background Information

- 6.1 Operation (OP) Taipan is a Police team that began in 2020 that focuses on tackling drug supply, ASB and gang activity. The Police team is made up of one Sergeant and nine constables that work both in plain clothes and full uniform. The Op Taipan team work closely with various departments within the Local Authority and external agencies on both short- and long-term measures to tackle crime and ASB. The team has been operating within and around Finsbury Park since July 2022 and in that time, it has built up a significant amount of local intelligence. Please refer to Appendix 2 for further details. It's clear that the collaborative efforts between council officers, policing partners, and other stakeholders have been effective in reducing crime in within and around Finsbury Park. By focusing on problem-solving and increasing patrols and enforcement measures, there has been a positive impact on the overall safety and security of the park area. However, it's also important to acknowledge that concentrating activities within the park may have led to a displacement of criminal and antisocial behaviours to the park entrances.
- 6.2 The issues described at the park entrances, such as illegitimate vehicle use, loitering, drug-related activities, and other forms of ASB, are indeed concerning. These problems not only affect the physical appearance of the area but also have negative implications for the well-being and quality of life of residents, businesses and visitors to the area. The location of the entrance by a busy junction and as part of a pedestrian thoroughfare makes it a crucial focal point for addressing these issues. The fact that the park entrance is part of a route used by pedestrians suggests that it holds potential for benefiting the mental and physical health of individuals who incorporate the park into their daily journeys. Open green spaces have been shown to have positive effects on well-being and can serve as places of relaxation and recreation. While overall crime types have shown a decrease from July 21 – June 23 with total crime decreasing from 876 incidents to 868 incidents, the volume of incidents remain high, with a number of increases in crime types within the Lower Super Output Area in Haringey surrounding Finsbury Park entrance. Notable increases in incidents include, drug offences, miscellaneous crimes against society, possession of weapons, robbery, and theft.
- 6.3 OP Taipan has utilised operational policing techniques above and beyond day-to-day policing to break the current paradigm of crime and ASB within the park itself. These include, engaging with local residents and shop owners who frequent the park on their way to work or during their break time and after work if they live locally. Engaging with residents and shop owners for their journey to work or as part of a recreation and wellbeing. Targeted patrols with subsequent stops and multiple arrests of perpetrators and utilising CCTV to identify crime and ASB within the park and outside the gate. In addition to the above, recent successes of Op Taipan include:

- Knife arches and dog operations to take knives off the street and disrupt drugs supply in the area, including at Finsbury Park station.
- Several significant arrests of individuals who were using the park to deal in drugs. Individuals have been charged and issued with community protection notices to remove them from the park as a long-term solution.
- Working with council officers to design out crime in hotspot locations in the park through the introduction of fencing and temporary hoardings.
- Together we have achieved a 3% reduction in overall crime in the area in June and an 18% reduction in July 2022 compared to the same months in 2021.

6.4 As part of the Love Finsbury Park initiative and in response to resident and local stakeholder feedback, Haringey Council trialled a series of additional community safety measures in summer 2022. This included the introduction of temporary overhead lighting between the Finsbury Gate and Endymion Road Gate, including the spurs that lead to Oxford Road and Stroud Green Road. This came ahead of permanent lighting, which is set to be installed along this route by autumn 2023.

6.5 In addition to physical changes, Haringey Council's ASB Enforcement Team have been carrying out regular patrols and engagement activities in the park in partnership with the police and outreach service BUBIC to identify hotspots for issues such as drug use and drug dealing, address reports and provide reassurance to residents. The team has installed signage in hotspot locations in and around the park to remind park users of the law and draw attention to crime-stopping features like CCTV cameras.

6.6 Whilst the work conducted by OP Taipan and the council has made a considerable difference within the park itself, it has highlighted that the problem location (the location that the PSPO will cordon off) is a crime generator. This leads to open drug dealing, violence and ASB, mainly committed by young males 16 years and upwards that work in large groups. The open space allows for large groups to congregate and feel safe in numbers whilst they conduct their drugs supply. The large groups generate a fear of crime amongst lone females or vulnerable individuals who wish to use the park, especially at night as they feel that is not safe to approach the park entrance, let alone enter the park.

6.7 The Council and the Police will continue to monitor the area and act upon any breaches of the PSPO. The Anti-Social Behaviour, Crime and Policing legislation allows for the use of penalties such as fixed penalty notices and prosecution for breaches of the PSPO. To support the legislation targeted and sustained enforcement will be used by partners including the Metropolitan Police, Haringey Policing Team, ASB Enforcement Team officers and other Council Officers. Assistance regarding evidence gathering can also be sought through CCTV. There will continue to be a cost to the Council if enforcement action is taken but no cost where the decision to prosecute is undertaken by the Police. This comprehensive

and coordinated approach involving various partners demonstrates a commitment to making the park and its surroundings safer and more enjoyable for everyone. The Police Superintendent and local Safer Neighbourhood Police have been consulted and support the proposal to introduce the gating PSPO.

### **7 Public Spaces Protection Orders (PSPOs)**

- 7.1 The aim of a PSPO is to stop individuals or groups committing anti-social behaviour in public spaces. Restrictions and requirements can be placed on an area where activities have or are likely to have a detrimental effect on the quality of life of local people, is persistent or continuing in nature and is unreasonable. These can be blanket restrictions or requirements or can be targeted against named behaviours by certain groups at particular times. The guidance is not specific about what can be included in a PSPO.
- 7.2 The potential use of a PSPO is very broad and flexible to allow a Council to cover individual circumstances in its area. A PSPO can cover multiple restrictions so one order could prohibit such activities as the drinking of alcohol and the control of dogs by requiring they are placed on a lead. The PSPO can cover any publicly accessible space with the Council's area, including an area in private ownership to which the public have access.
- 7.3 Enforcement will be shared between the Council and the Police. Breach of a requirement to desist in a particular activity is a criminal offence which can result in a fixed penalty notice or a fine of up to £1,000 on conviction by a magistrate's court. Enforcement can be undertaken by Council officers, and other groups the Council may designate, but principally Police officers and Police Community Support Officers (PCSOs). The Police will additionally have the power of detention. Any enforcement action undertaken by the Council and/or the Police, will fall within the duties of the ASB and Enforcement Service and Police duties and therefore staff costs will be met from existing budgets.
- 7.4 The PSPO's have been implemented in other parts of the borough and have proven to be very successful. Enforcement action and fixed penalty notices have been taken against individuals that have breached the PSPO. This has seen a significant improvement in the quality of lives of people living and working in the locality.
- 7.5 By effectively using the powers available under the Anti-social Behaviour, Crime and Policing Act 2014 alongside enforcement from partners, it is envisaged that a long-term enforcement approach will tackle the historical issues that have been ongoing at this location.

### **8 Proposal for matters to be contained in the PSPO**



- 8.1 It is proposed to consult on the introduction of a PSPO which will cover:
- Gating an area that is blighted with, illegitimate vehicle use, fly tipping, drug dealing, drug taking, street drinking, discarded beer cans, drugs paraphernalia, urine, and faeces.
- 8.2 The proposal is for two (2) gates, as outlined in the draft PSPO at Appendix 1. The purpose of the two gates is to allow access to capable guardians on a daily basis and during events to create a sterile area or control the flow of public. Recommendation of gates as stipulated in the EVA are as follows: The costs of manufacture and installation of the gate currently estimated at £26k, will be funded by the Metropolitan Police
1. An angled return fence is required to remove blind spots when public pass the corner from Lidl reducing fear of crime.
  2. Sufficient space has been allowed for 2-3 people to pass on the pavement. It is not illustrated but the proposed new pavement width here matches the pavement width beyond the Finsbury gate towards the Manor Park entrance.
  3. Gate 2 will return back towards the tree or fully back towards the fence where it can be locked in the open position when required.
  4. Final return to the park perimeter prevents intrusion from the rear.
  5. Fence line goes behind BT phone box to ensure that the facility can still be used by the public.
  6. Gate 1 is a vehicle gate for Lidl deliveries however general vehicle access is not required.
  7. If required Gate 1, will return back towards the wall, where it can be locked in the open position if required.
  8. This strategy will only work if the railing and gates are visually permeable to allow natural surveillance into that space at all times.
- 8.3 The land in relation to which this Order applies is that land in the area of the London Borough of Haringey, namely that which is delineated and shown in map at Appendix 1 and forming part of the Order.
- 8.4 A breach of the prohibition can result in a maximum penalty not exceeding level 3 on the standard scale (currently £1000).
- 8.5 Monitoring and enforcement of the PSPO would be met from within existing ASB Enforcement and police resources, any income arising would be used to support enforcement activity.
- 8.6 This Order will come into force on **XXX 2023** (date to be confirmed) and shall remain in place for 3 years, until **XXX 2026** (date to be confirmed).
- 8.7 At any point before the expiry of this 3 years period the Council can extend the order by up to three years if they are satisfied on reasonable grounds that this is



necessary to prevent the activities identified in the order from occurring or recurring or to prevent an increase in the frequency or seriousness of those activities after that time.

- 8.8 Any challenge to this Order must be made in the High Court by an interested person within six weeks of it being made. An interested person is someone who lives in, regularly works in, or visits the restricted area. This means that only those who are in the locality or providing services within the locality are directly affected by the restrictions and have the power to challenge. The right to challenge also exists where the Council varies an Order.

## 9 Consultation process

- 9.1 The Council's ASB Enforcement Team will carry out extensive consultation, namely:

- Consultation will run for a minimum period of six weeks.
- An online public consultation survey will be made available the council website.
- The ASB Enforcement Team will design a consultation letter outlining the reasons for the PSPO and its proposed prohibitions.
- The letter will direct residents/business owner/workers/shoppers to the online survey and the ASB Enforcement mailbox.
- Presentation and engagement with Friends of the park and other user groups and panels linked to the park.
- ASB Enforcement will erect notices about the consultation in and around the park.
- ASB Enforcement will add details about the PSPO to the Love Finsbury Park web site.
- ASB Enforcement will supply the letter to local businesses for their information and to display for customers.
- ASB Enforcement will attend the appropriate Safer Neighbourhood (MPS) Panel.

- 9.2. The costs of the consultation itself will be minimal: web design for online questionnaire, printing of letters, officers time attending meetings and other public engagement. These will be met by the ASB Enforcement Team through existing resources and support of partners.

## 10 Contribution to strategic outcomes

### 10.1 Corporate Delivery Plan 2023/2024

Our vision for all residents and businesses in Haringey is summarised in Priority 3 of the Borough Plan 2019 - 2023:

**Priority 3 - Our vision is for a place with strong, resilient and connected communities where people can lead active and healthy lives in an environment that is safe, clean and green.**

*We will work with communities to improve the environment, particularly by reducing anti-social behaviour, making members of the community feel safer in the area where they live or work.*

*We will work with partners to prevent and reduce more serious crime, by joining up our enforcement teams to monitor and enforce serious incidents of anti-social behaviour.*

*We will help identify and tackle issues more effectively, making members of the community feel safer in the area where they live or work. Preventing and acting against those, perpetrating ASB increases resident confidence and promotes their health and wellbeing, making them feel safer in their homes.*

**The Haringey Labour Manifesto puts our residents at the heart of what we do, with a priority to protect our residents,**

*It is important that we all feel safe on the streets of Haringey and in our homes. That is the minimum requirement for a good society.*

*Living and working in areas where anti-social behaviour is rife can have a devastating effect on communities and individual lives. Every Haringey resident has the right to enjoy their local area in comfort and safety.*

## **11 Statutory Officers comments (Director of Finance including procurement, Head of Legal and Governance, Equalities)**

### **11.1 Finance (including Procurement)**

The report requests Cabinet to approve the recommendation to consult on a Public Space Protection Order. The cost of the consultation is £1000 and will be accommodated within existing revenue budgets.

Should the consultation agree to the proposed Public Space Protection Order, the gates will be constructed to Secure by Design and accredited to LPS1175SR2 standard. The costs of manufacture and installation of the gate currently estimated at £26k, will be funded by the Metropolitan Police budget.

## **12 Legal & Governance**

### **12.1 The Head of Legal and Governance has been consulted in the preparation of this report and comments as follows.**

Section 59 of the Anti-social Behaviour, Crime and Policing Act 2014 (“the Act”) enables the Council to make a Public Spaces Protection Order (PSPO) if satisfied on reasonable grounds that:

- Activities carried on in a public place within the Borough either have had or it is likely that they will have, a detrimental effect on the quality of life of those in the locality.
- It is likely that the detrimental effect will be persistent, and such as to make the activities unreasonable;
- The effect or likely effect is such as to justify the restrictions imposed by the proposed PSPO.

12.2 Before making a PSPO that restricts a public right of way, section 64 (1) of the Act requires the Council to consider (i) the likely effect of making the order on the occupiers of premises adjoining or adjacent to the highway (ii) where the highway constitutes a through route, the likely effect of making the order on other persons in the locality (iii) the availability of a reasonably convenient alternative route.

12.3 The PSPO may authorise the installation, operation and maintenance of barriers for enforcing the restriction on the public right of way, but the highway does not legally cease to be regarded as highway by reason of the restriction and barriers.

12.4 The Council must comply with the consultation requirements in section 64(2) of the Act by (i) notifying potentially affected persons of the proposed order, informing those persons how they can see a copy of the proposed order, notifying those persons of the period within which they can make representations and considering any representations made. In addition, in accordance with section 72(3) of the Act, the Police and whatever community representatives the authority thinks it appropriate, must be consulted.

12.5 Regarding consultation itself, in accordance with the so called “Sedley Principles” it has to be at a time when proposals are still at a formative stage. The Council has to give sufficient reasons for any proposal to permit an intelligent consideration and response, adequate time has to be given for consideration and response, and finally, the product of consultation has to be conscientiously taken into account in the light of administrative law principles and the relevant statutory powers.

12.6 The proposed consultation complies with the Act and the above principles and following the consultation, a further report will be required with the outcome and final recommendations.

## **13 Equality**

13.1 The council has a Public Sector Equality Duty (PSED) under the Equality Act (2010) to have due regard to the need to: • Eliminate discrimination, harassment and victimisation and any other conduct prohibited under the Act • Advance equality of opportunity between people who share protected characteristics and people who do not • Foster good relations between people who share those characteristics

and people who do not The three parts of the duty apply to the following protected characteristics: age, disability, gender reassignment, pregnancy/maternity, race, religion/faith, sex and sexual orientation. Marriage and civil partnership status applies to the first part of the duty. Although it is not enforced in legislation as a protected characteristic, Haringey Council treats socioeconomic status as a local protected characteristic.

- 13.4 We will undertake letter drops and exercises to all affected residents and business in the locality.
- 13.5 The introduction of a PSPO in the locality of Finsbury Park has the potential to have a positive impact on the Council's duty under the Equality Act 2010, to foster good relations between communities. It will tackle antisocial behaviour which has the potential to create tensions between different communities.
- 13.6 The PSPO will apply to all individuals committing antisocial behaviour within the designated area, without discrimination. The Consultation process will seek to gather the views of all local communities and ensure that the characteristics of respondents are recorded. Equalities analysis of the consultation response and results, and an outline of any proposed mitigating actions, will then be recorded in an Equalities Impact Assessment which will be carried out once the consultation is complete.
- 13.7 The Equality Impact Assessment (EqIA) Screening tool has been completed and a full EqIA, is not required at this time as
- The proposal is likely to have no/minimal impact on groups that share the protected characteristics or other disadvantaged groups
  - The only group identified that may be affected is young males aged 16 and above who currently use the area for illegitimate use including committing ASB and drug dealing. The ASB team will liaise with youth services to inform them of the proposals and ensure that this group affected will be included in the consultation. Any cases of young males using the area illegitimately during the period of the consultation will be assessed and referred to an appropriate service if necessary.
  - This proposal is for approval to consult on a proposed PSPO. Should the consultation give rise to any issues of inequality not yet identified then a full EQIA can be completed in advance of seeking approval for the actual PSPO to enable the installation of the gate.
  - The gating of the alley way is likely to have a positive impact on residents living in the locality and staff working in and around the location; in making the area cleaner and safer.

A copy of the completed screening tool is attached at appendix 4

**14 Use of Appendices**

- Appendix 1 – Draft PSPO
- Appendix 2 – MPS EVA report
- Appendix 3 – Equality Impact Assessment Screening Tool

**15 Local Government (Access to Information) Act 1985**

Not applicable.

This page is intentionally left blank

**APPENDIX 1**

**Draft**

**Finsbury Park (South Entrance)**

**Public Spaces Protection Order**



ANTI-SOCIAL BEHAVIOUR, CRIME AND POLICING ACT 2014

PART 4, SECTION 59

PUBLIC SPACES PROTECTION ORDER

Notice is hereby given that the London Borough of Haringey exercise of its powers under Section 59, 60, 64 and 72 of the Antisocial Behaviour, Crime and Policing Act 2014 ("the Act") hereby makes the following Order:-

**The London Borough of Haringey**

**Finsbury Park (South Entrance) Public Spaces Protection Order**

1. The Order shall come into operation on (to be determined) 2023 and shall have effect for a period of 3 years thereafter, unless extended by further orders under Haringey Council's (hereafter 'the Council') statutory powers.
2. The Order relates to the designated area of Finsbury Park as shown on the attached plan.
3. The Order will restrict access to the area located by the South Entrance to Finsbury Park as depicted in red on the map attached to this report, by erecting typical fencing with two gates around the restricted area. The purpose of the fencing and gates is to reduce crime and anti-social behaviour while allowing access to capable guardians on a daily basis and during events to create a sterile area or control the flow of public. Restricted access will apply at all times and to all persons, except for those persons listed below.
  - a) Fire brigade, police, or NHS Trust/Foundation staff when in the exercise of their duties.
  - b) Employees, contractors, or agents of statutory undertakers in relation to gas, electricity or water or telecommunications apparatus as defined in the Telecommunications Act 1994 situated in the relevant highway in connection with the laying, erecting, inspection, maintenance, alteration, repair, renewal, or removal of any relevant apparatus.
  - c) Council staff and authorised contractors when in the exercise of their duties.
  - d) Persons using the highway with the permission of on the direction of a duly authorised Council Officer in this regard.
  - e) Lidl to have access for deliveries
- 4.

5. Any person, other than those persons listed in Paragraph 3 above, who is found entering the restricted area as detailed in red on the attached plan will be in breach of the order and liable to a fine or penalty as detailed in section 10 below.
6. The Council is satisfied that the conditions set out in Sections 59, 64 and 72 of the Act have been met, and that it is, in all the circumstances, expedient to make this order. The order is required to reduce the detrimental effect of crime and anti-social behaviour in the Restricted Area, which has had a detrimental effect on the quality of life of those in the locality and to reduce the risk of this reoccurring. The effect or likely effect of the anti-social behaviour and crime in the Restricted Area is of a persistent or continuing nature such as to make it unreasonable, and justifies the restrictions imposed by this Order.
7. If any interested person desires to question the validity of this Order on the grounds that the Council had no power to make it or that any requirement of the Act has not been complied with in relation to this Order, he or she may apply to the High Court within 6 weeks from the date on which this Order is made.
8. A person is guilty of an offence under section 67 of the Act if they breach the . restrictions of this public spaces protection order by entering the area referred to above. A person guilty of an offence under section 67 of the Act is liable on summary conviction to a fine not exceeding level 3 on the standard scale.
9. A constable or an authorised person may issue a fixed penalty notice to anyone he or she has reason to believe has committed an offence under section 67 of the Act in relation to a public spaces protection order by entering the area referred to above. Where a person is issued with a notice under this section in respect of an offence
  - a) An amount specified under subsection (5) (c) is £100 payable to London Borough of Haringey.
  - b) No proceedings may be taken for the offence before the end of the period of 14 days following the date of the notice.
  - c) The person may not be convicted of the offence if the person pays the fixed penalty before the end of that period.
  - d) If the fixed penalty is not paid before the end of the period referred to above they may be prosecuted as referred to in paragraph 9 above. A copy of the Order and map may be obtained by contacting ASB Enforcement team 0208 489 1000. Alternatively, the Order can be seen at [www.haringey.gov.uk](http://www.haringey.gov.uk)

Date: \_\_\_\_\_

2023

Image 1:

Finsbury Park Map of restricted area – delineated in RED



DRAFT

This page is intentionally left blank



**GSC: Official**

**Location: Finsbury Park**

**Prepared by:** The Metropolitan Police  
Designing-Out Crime Group working under the  
Continual Policing Improvement Command.

**Completed by:** PC Lee Warwick 463TP

**Supervised by:** PS David Lucy

**Prepared for:** PS Matt Clarke under Op  
Tiapan

**Our Reference:** NE 7212 (addition to NE  
6602)

**Date:** 26/01/2023 – original

07/03/2022 – revised

This report gives recommendations. Please note that Crime Prevention Advice and the information in this report does not constitute legal or other professional advice; it is given free and without the intention of creating a contract or without the intention of accepting any legal responsibility. It is based on the information supplied and current crime trends in the area. All other applicable health, safety and fire regulations should be adhered to.

All material in this report is subject to copyright. Unless it is specifically stated that particular material is available for general use then it should not be copied or re-used without the explicit permission of the Metropolitan Police Service or of other copyright holders where material is used under license.

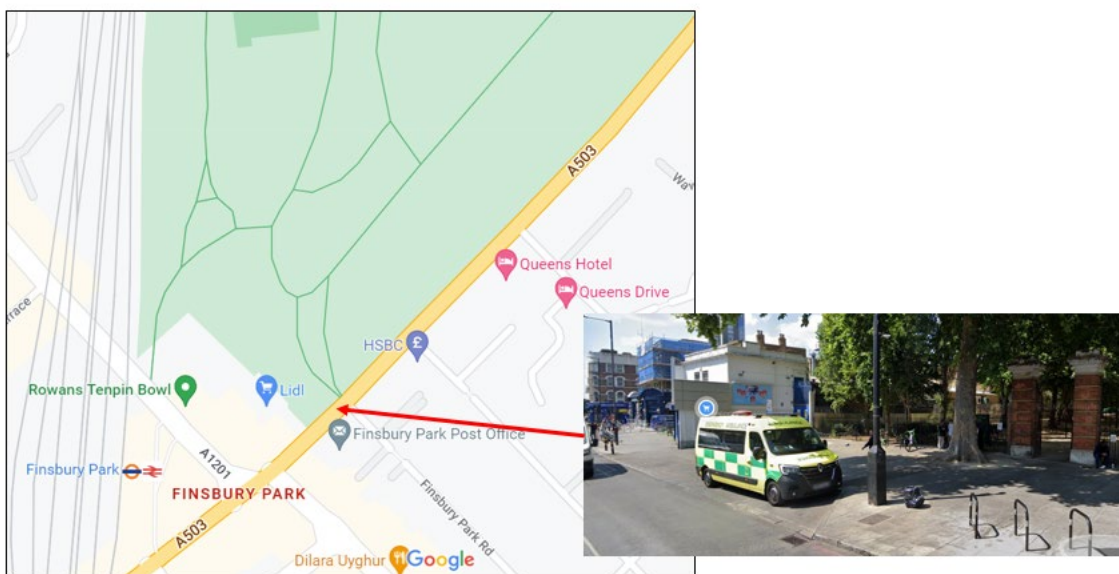
Contents	Section
Executive Summary	1
Introduction	2
Crime Statistics	3
Design and Layout	4
Observations	5
Recommendations	6

# 1. Introduction

## Location description

There have been various reports on Finsbury Park and the issues that occur in and around it. This report focuses specifically on the south entrance situated opposite Finsbury Post Office and next door to Lidl's supermarket. In particular the report focuses on the space between the park entrance and the gable end of the Lidl building.

Finsbury park is bounded by three boroughs Haringey, Islington and Hackney but the park itself sits inside the ward of Harringay. Focus for this report is the south entrance of the park and a relatively small area that is a busy town centre type junction.





## 2. Executive Summary

A request has been made internally by Op Tiapan (MPS problem solving team) to provide supplementary support to the previous EVA NE 6612 which gave an overview of the main issues within the park itself and recommendations to reduce the crime that occurs.

A particular focus is being given within this report on activity that is occurring within this specific location that is having a detrimental effect on the public safety and wellbeing with a focus on VAWG (violence Against Women and Girls).

Op Taipan has made a considerable difference in reducing crime within the park itself through problem solving and additional patrols, possibly displacing the criminal and antisocial activities to the park entrances which lends itself

The purpose of the report is to provide supporting evidence of the activity taking place at this specific location and to provide short term and long term solutions to improve the physical environment and create a safe sense of place for members of the public by disrupting drug and ASB related activities.

### Revised Summary

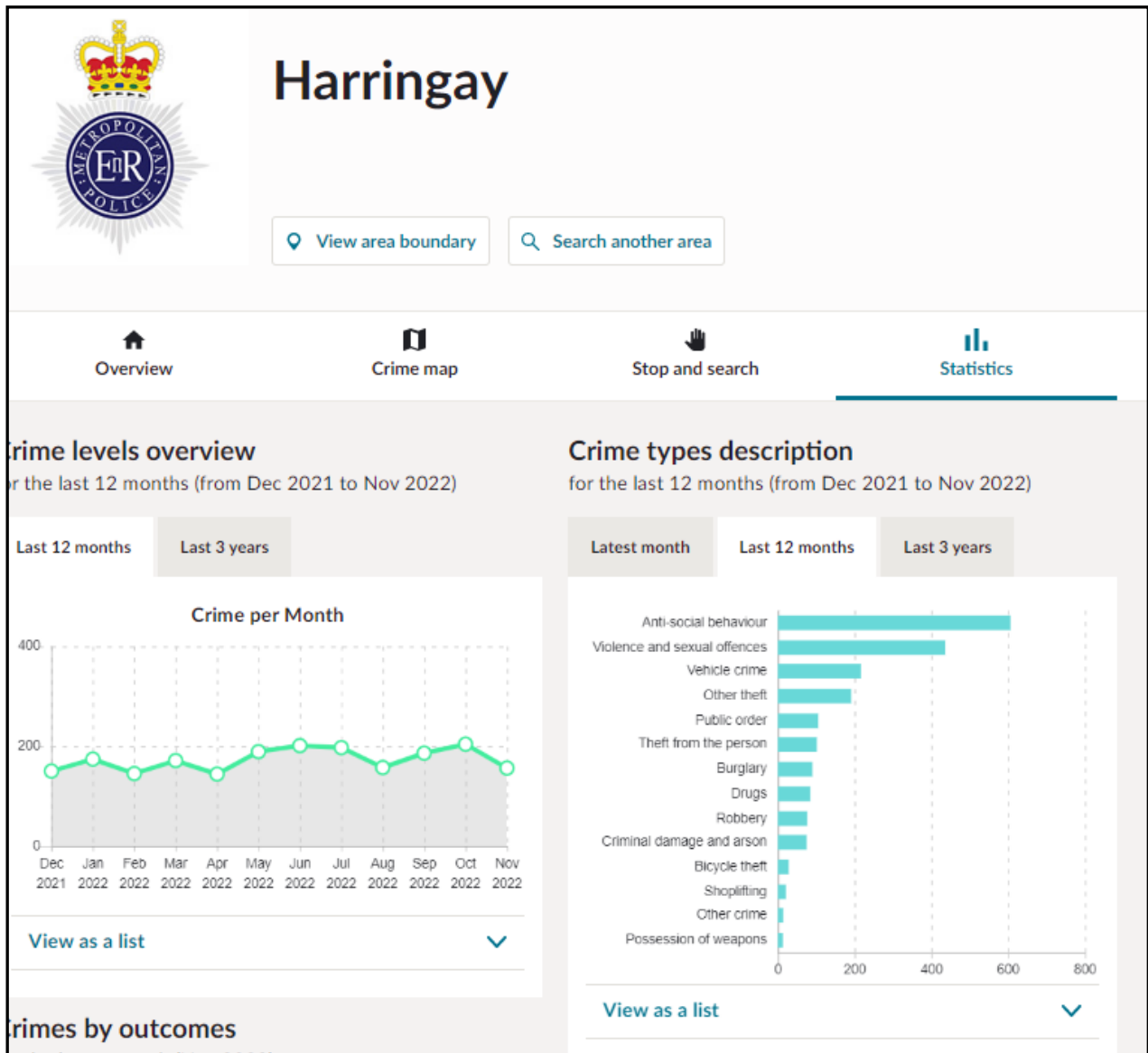
In addition to the above a site survey was conducted with Sergeant Matt Clarke and a potential supplier of the fencing to determine the most practical method of securing the space to reduce crime and ASB whilst maximising the benefits to local resources ( local authority, police and localised services).

No additions have been made to the body of the report, only the final recommendations

### 3. Crime Statistics

This report has been requested internally and is based on specific local intelligence provided by OP Tiapan which may not be in the public domain, this intelligence when provided adds weight to the report findings.

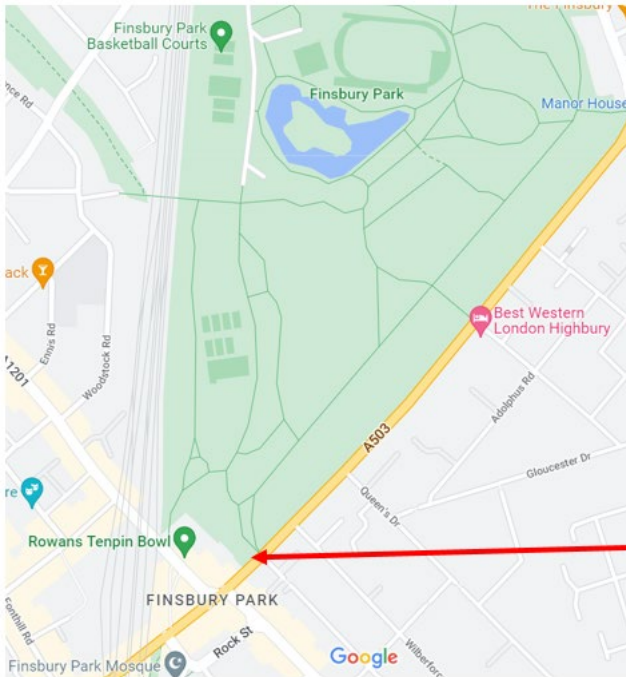
The information below gives an indication of the level of crime in the Ward of Haringey and this would have been predominantly in the Finsbury Park area.



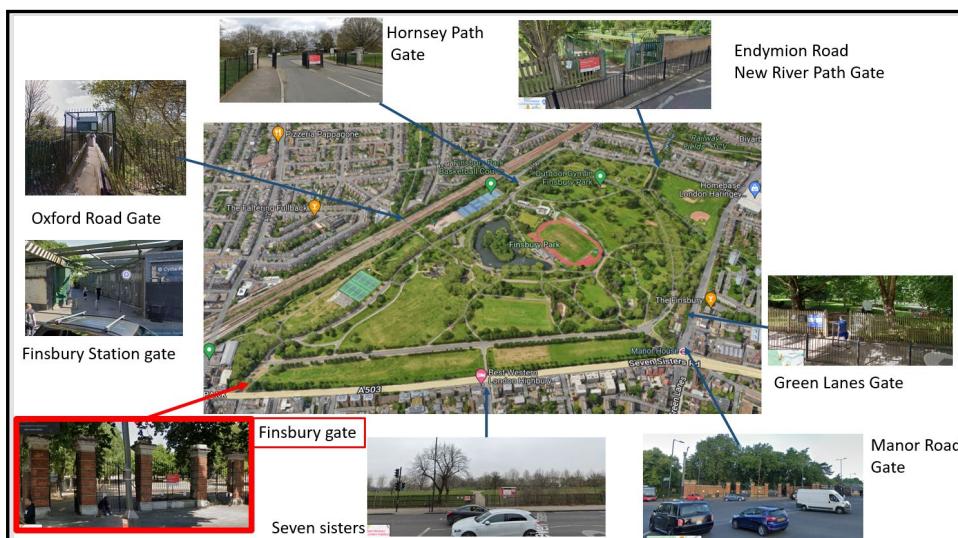
Whilst the information shown provides the statistics for the ward of Haringey, it does indicate that there is an increase in ASB, Violence & Sexual offences, robbery and drugs. Often such crimes are intrinsically linked and when concentrated in a small location such as the entrance to Finsbury park will create a space that feels unsafe. ASB and Drug related crimes often go unreported as they become more acceptable and part of the “norm” in a public space.

# 4. Design and Layout

The entrance to the park is located by a comprehensive and busy junction and is part of the main thoroughfare for pedestrians. Whilst the journey through the park is not always the shortest, it does present open green space that is beneficial to both mental and physical health of an individual who may make a subconscious decision to use the park as part of their journey to a final destination.



As can be seen from the image above the majority of foot traffic comes from the direction of Lidl (includes the crossing, Rowans Tenpin bowl, Finsbury Station and various PHs).



The park currently has free moving access with no gates being closed of a night time, some of this is due to the large scale of the park and the current associated risk of “locking” a member of the public in the park.

There are only three original major park entrances

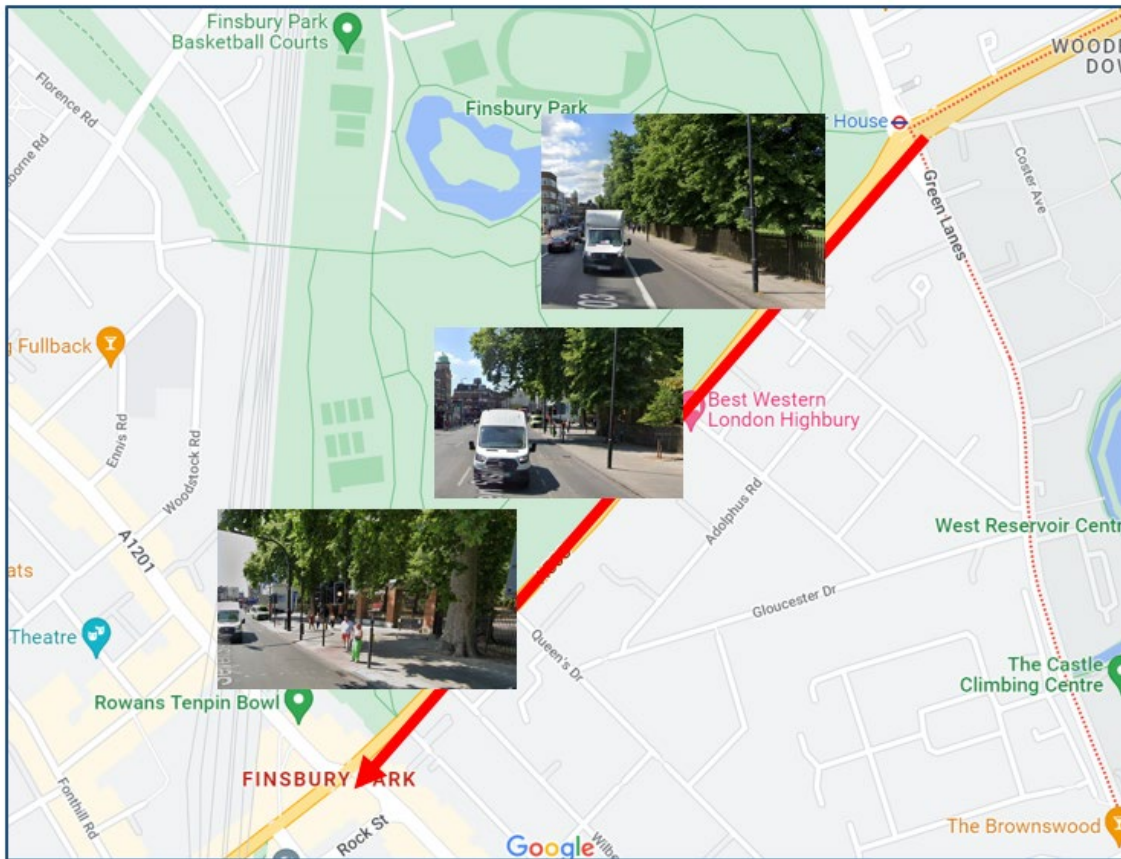
**Finsbury Gate** – Main focus of this report

**Manor Road Gate** and

**Hornsey Gate.** Other gates are situated around the park and these may have originally been installed to give local residents access to the park without the need to walk to the main entrance.

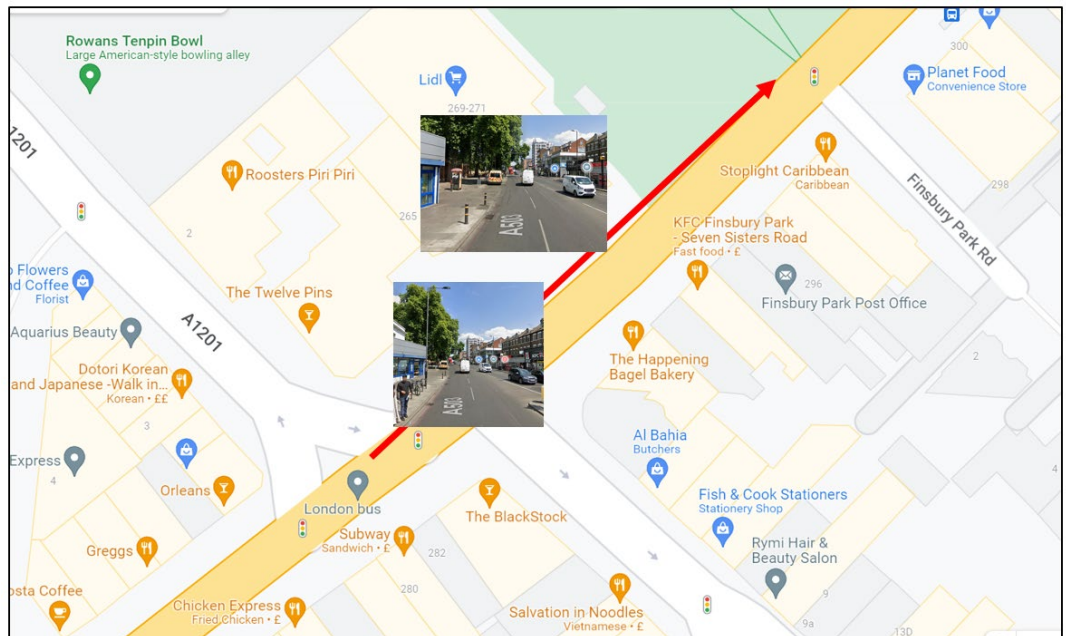


The north exterior footpath from the direction of manor house is transient by its nature and provides fewer opportunities for drug related crime, in particular where the perpetrator needs to be static (loiter) and in a location that is known to their buyers.



This image demonstrates the typical view that the pedestrian would get when walking along the park edge south towards Finsbury Park entrance.

By contrast the pedestrian direction from Lidl and all of the other amenities provide a narrow line of sight and places for unlawful activity to take place. It is a dead space which serves no purpose and has no sense of place or public safety.





## 5. Observations

### The Open Space

There are several issues with this space that have led to the area being misused for criminal activity and ASB. The issue is not just from pedestrian traffic, but also mopeds that are parking on the pavement. Although some of the moped riders may have genuine and legitimate reasons to be there, this often leads to all moped users, legal and illegal making the assumption that this acceptable practice and creating a desire line equivalence with mopeds in this area. (note- that a desire line is the line of least resistance from A to B, which once established is difficult to remove even when it is to the detriment of the general public)

It has also been noted that the majority of moped users are there under the pretence of being delivery drivers but are facilitating the supply of drugs.



#### Note the following concerns

1. Blank elevation of Lidl building with no natural surveillance
2. Lack of rule setting for moped parking.
3. Lack of natural surveillance due to the narrowing of the footpath.

#### This image demonstrates

1. How easy it is for someone to hide behind the corner
2. Lack of legitimate ownership of the open space leading to park entrance.
3. Lack of rule setting
  - a. Poor pavement markings or change of pavement
  - b. No signage demonstrating the legitimate usage of the area



**Note** the additional security from Lidl, with the extension of the perimeter treatment above the gate. It is easy for a car to park against the wall and moped to park in the open space without restrictions.

(previous bike stands have been removed)



## What has been done already

Op Taipan has been operating within Finsbury Park since July 2022 and in that time it has built up a significant amount of local intelligence. OP Taipan has utilised operational policing techniques above and beyond day to day policing to break the current paradigm of crime and ASB within the park itself. These include (not exhaustive)

- Engaging with local residents and shop owners who frequent the park
  - On their way to work or during their break time
  - After work if they live locally
  - For their journey to work or as part of a recreation and wellbeing
- Targeted patrols with subsequent stops and multiple arrests of perpetrators
- CCTV to identify crime and ASB within the park and outside the gate.

Whilst the work conducted by OP Taipan and has made a considerable difference within the park itself, it has highlighted that the design of the gates, which cannot be changed (and the location indicated at the front of the gates) is a crime generator. This leads to open drug dealing, violence and ASB, mainly committed by young males 16 years and upwards that work in large groups.

The open space allows for large groups to congregate and feel safe in numbers whilst they conduct their drugs supply. The large groups generate a fear of crime in particular amongst lone females or vulnerable individuals who wish to use the park, especially at night as they feel that is not safe to approach the park entrance, let alone enter the park.

All of the above information is supported by evidence provided by OP Taipan and is available on request



## 6. Recommendations

Normally the focus on recommendations is for short, medium and long term, but this report requires recommendations to fulfil funding needs and therefore will focus on what can be achievable now and in the Short term to Medium term

### Now

**Fence off Open space** - Implementing a temporary enclosed space that is controlled by railings at 1.8m in height. Incorporated into this space should be a manual gate operated by Lidl's to allow vehicle access during delivery times.



The above image is for illustration purposes in both colour and position. The following attributes should be part of the fence treatment

- 1.8m in height
- Match the appearance where feasible of the park fencing
- Bolted to the ground so that it can be removed
- Have a vehicle access gate for Lidl and the enclosed space.

Closing the open space is intended to reduce the criminal activity at the location.

**Note** – Following must be considered when fencing off the location

- Lighting and CCTV must be re-evaluated and adapted according to the change in landscape and design
- Advertising Banners and signs are to be omitted from the railings to ensure natural surveillance through the railings.



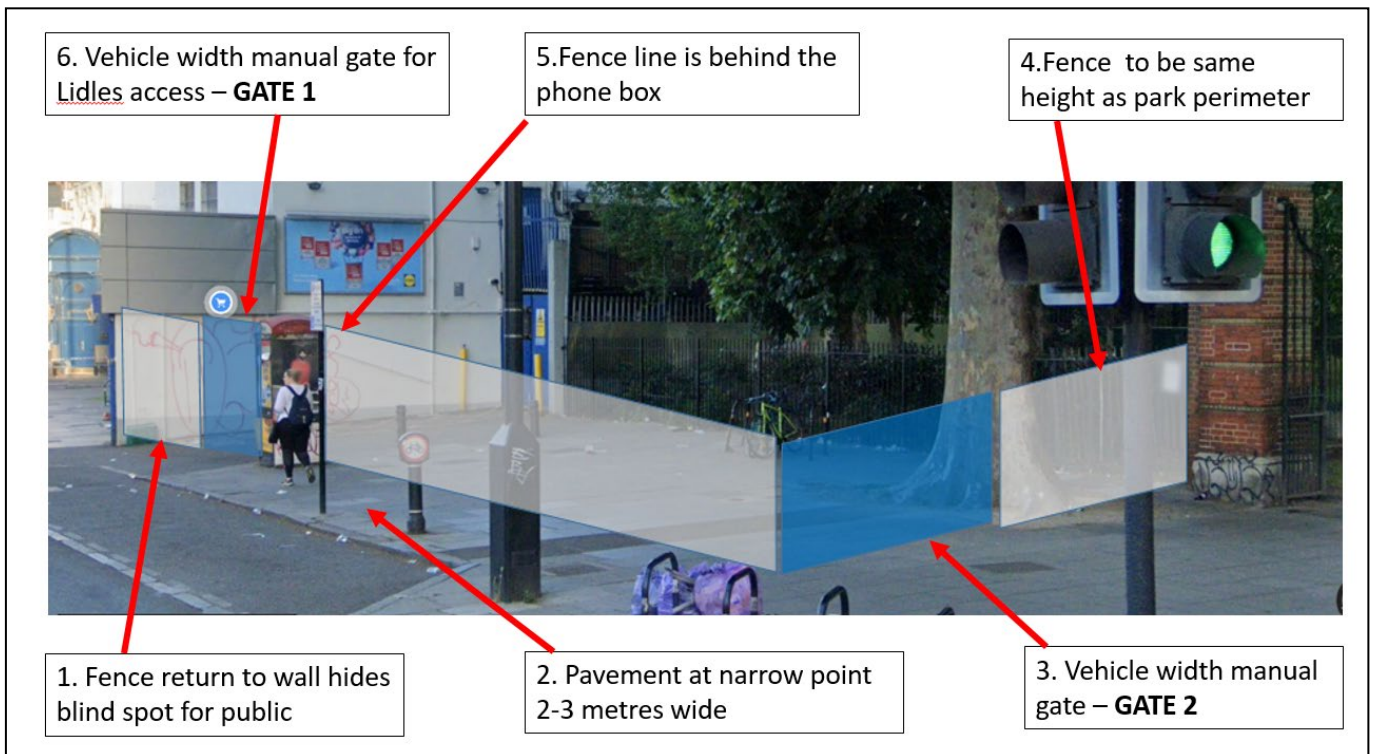
**ADDITION – Revised 07/03/23**

The principle of fencing the area off to reduce crime and ASB is still the purpose of the report but the following recommendations are further refined to ensure that the space can be utilised effectively, in particular for events and crowd control. The space should be controlled via two gates:

**Gate 1** – Lidl's side entrance

**Gate 2** – Park entrance

The purpose of the two gates are to allow access to capable guardians on a daily basis and during events to create a sterile area or control the flow of public. The diagrams (for illustration purposes only) show how the area can be utilised.



1. An angled return fence is required to remove blind spots when public pass the corner from Lidl's reducing fear of crime
2. Sufficient space has been allowed for 2-3 people to pass on the pavement. It is not illustrated but the proposed new pavement width here matches the pavement width beyond the Finsbury gate towards the Manor Park entrance.
3. Gate 2 will return back towards the tree or fully back towards the fence where it can be locked in the open position when required.
4. Final return to the park perimeter prevents intrusion from the rear
5. Fence line goes behind BT phone box to ensure that the facility can still be used by the public
6. Gate 1 is a vehicle gate for Lidl deliveries however general vehicle access is not required.
7. If required Gate 1, will return back towards the wall, where it can be locked in the open position if required
8. **This strategy will only work if the railing and gates are visually permeable to allow natural surveillance into that space at all times.**

**Note** - keys for capable guardians can be provided ( Police, Local Authority, Lidl )

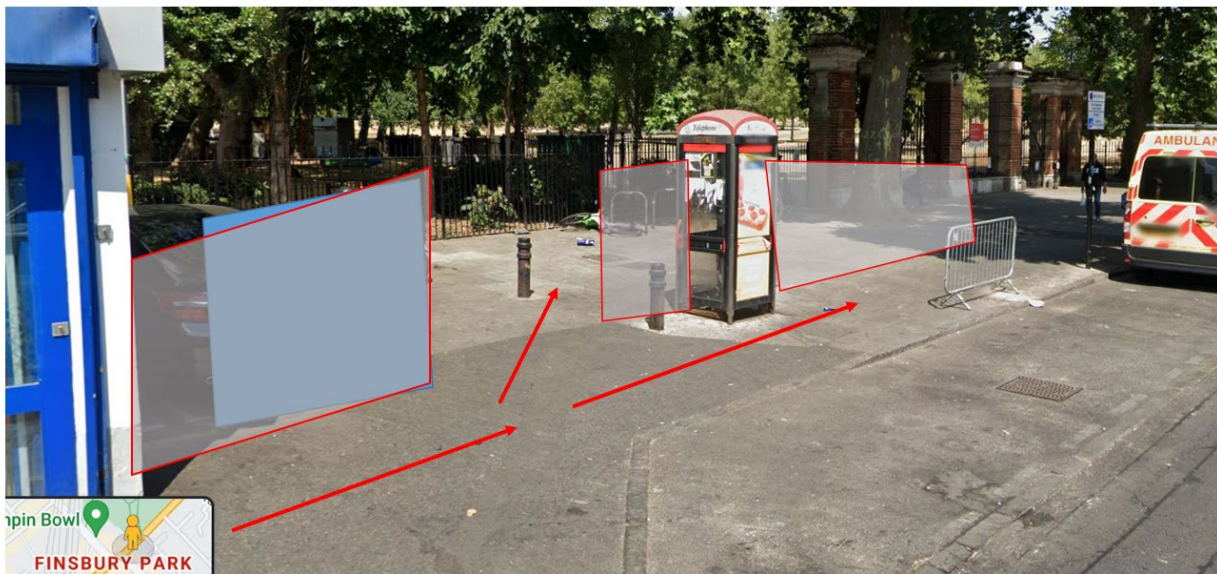
### When Gates are closed

- Act as a fence barrier to reduce crime and ASB
- Can create positive spaces with an option to open or close one or two gates
  - Sterile police area during events
  - Market space
  - Public support events – Homeless assistance



### When gates are open

- Creates a controlled flow of public through the space during events as either side of the fence line can be used.
  - Image below is one illustration that can demonstrate flow of foot traffic with the gate open.



### Short to medium term

If the target hardening proves to be successful in reducing the size of the crowds gathered and the criminal activity taking place then would look to improve the fencing to have the following attributes as well as the above.

- Removability and repositioning of fencing to widen the pavement space for functions within the park. This may require some engineering design to allow the fence posts to be slotted and secured into the ground as opposed to bolted to the ground as per previous recommendations.
- Inclusion of gates to allow the space to be utilised for functions such as
  - Sterile area for organisers and police during park events
  - Use of pop events such as small markets or art exhibitions
  - Use of space for charity interventions such as homeless or drug interventions.

**Additional Consideration** - The space can also be occupied by a food or coffee outlet with the space allocated to seating and secured off at night time. This has been successful in Ducketts Common and has increased natural surveillance of an area plus increased positive activity.

If utilised, consideration must be given to the reduced surveillance into the park itself, which may require further enhancement through lighting or CCTV

### Types of railing

Typically we are looking at designs similar to the following and below are example companies that provide this type of fencing



<https://allsteelfencing.co.uk/product/1-8m-high-standard-vertical-bar-railings/>



<https://www.aafencing.co.uk/900mm-high-vertical-bar-railings-4.html>

<https://www.grammbarriers.com/our-products/security-fencing/railings/arma-bar-light/>

<https://www.externalworksindex.co.uk/entry/47433/Barkers-Fencing/StyleGuard-R-round-tubular-steel-railings/>

**END OF REPORT**

This page is intentionally left blank

**Equality Impact Assessment Screening Tool**

1	Lead officer contact details: SALMAN AZIZ/JAMAINE BROWN			
2	Date:			
3	Summary of the proposal: PSPO to enable the gating of Dovecote Avenue			
	<b>Response to Screening Questions</b>	<b>Yes</b>	<b>No</b>	<b>Please explain your answer.</b>
<b>a) Type of proposal</b>				
4.	Is this a new proposal or a significant change to a policy or service, including commissioned service?		✓	<b>The proposal is for approval to consult on the implementation of a Public Spaces Protection Order to enable the council to gate a public right of access where there has been anti-social behaviour and nuisance. There are no policy or service or impact on staffing arrangements</b>
5.	Does the proposal remove, reduce or alter a service or policy?		✓	
6.	Will there be a restructure or significant changes in staffing arrangements? Please see the restructure pages for guidance for <a href="#">restructure EqlAs</a> .		✓	
7.	If the service or policy is not changing, have there been any known equality issues or concerns with current provision. For example, cases of discrimination or failure to tackle inequalities in outcomes in the past?		✓	
<b>b) Known inequalities</b>				
8.	Could the proposal disproportionately impact on any particular communities, disadvantaged or vulnerable residents?		✓	<b>The area to be gated is a public right of way, however it is not generally used by the public as a short cut to access any provision. The area is however subject to significant fly tipping and</b>

9.	<p>Is the service targeted towards particular disadvantaged or vulnerable residents?</p> <p><i>This can be a service specifically for a group, such as services for people with Learning Disabilities. It can also be a universal service but has specific measures to tackle inequalities, such as encouraging men to take up substance misuse services.</i></p>		✓	<p><b>loitering with nuisance, which present an unsafe environment for residents in particular. Residents and businesses requiring access will be given access, as the gate will be fitted with a key pad entry lock, which will be provided to legitimate residents and businesses.</b></p>
10.	<p>Are there any known inequalities? For example, particular groups are not currently accessing services that they need or are more likely to suffer inequalities in outcomes, such as health outcomes.</p>		✓	
11	<p>If you have answered yes to at least one question in both sections a) and b), Please complete an EqIA.</p>			<p>A full EqIA, is not required at this time as</p> <ul style="list-style-type: none"> <li>• <b>The proposal is likely to have no/minimal impact on groups that share the protected characteristics or other disadvantaged groups</b></li> <li>• <b>This proposal is for approval to consult on a proposed PSPO. Should the consultation give rise to any issues of inequality not yet identified then a full EQIA can be completed in advance of seeking approval for the actual PSPO to enable the installation of the gate.</b></li> <li>• <b>The gating of the alley way is likely to have a positive impact on residents living in the locality and staff working in and around the location; in making the area cleaner and safer.</b></li> </ul>



**Decision cover page**

Report Title: Dovecote Avenue Gates Public Space Protection Order – Noel Park Ward

Date of Decision:

Report Author: Joan Appavoo

Contact No:

Council Leadership Team Lead (and date report agreed):

Report Title	Dovecote Avenue Gates Public Space Protection Order – Noel Park Ward
<b>*Legal Comments Provided by:</b>	Michelle Williams
<b>*Financial Comments Provided by:</b>	John O’Keefe
<b>*Equalities Comments Reviewed by:</b>	Diptasri Basu
<b>*Procurement Comments Provided by:</b>	n/a
<b>In the Background - This section of the report includes outlining consultation with partners/stakeholders, service users, residents more generally, business, other public bodies, interest groups, government, staff or statutory consultees. Please indicate if this has happened and who has been consulted. Also include how consideration has been given to the Haringey Deal and to hearing the voices that are too often overlooked</b>	<p>Consultation letter distributed to wide range of partners/stakeholders for dissemination, also hand delivered to all residents/business in the affected location &amp; immediate area. Drop-in sessions publicised in letter and on line, including session held at Rising Green Youth Hub</p> <p>A Dovecote Avenue Taskforce<sup>1</sup> has been set up to discuss feedback from residents, agree and monitor actions to address ongoing issues and concerns. Progress is provided to the established Residents’ Association.</p>
<b>Number of Appendices included –</b>	Four Appendices
<b>Date considered by Cabinet Member</b> Please note that if your report impacts or relates to two or more Cabinet portfolios, you will need to also arrange a further briefing meeting with the Cabinet	

<sup>1</sup> The Dovecote Avenue Task Force is chaired by the ASB & Enforcement Head of Service and attended by officers from a range of services including: Corporate Landlord, LBH Capital Projects & Property, Community Safety, Waste Services, Waste Enforcement, Parking Services, ASB Enforcement, Community Gold, Licensing, Housing Partnerships, Sanctuary Housing, Regeneration Team, MPS (Safer neighbourhood Team) and MPS Designing Out Crime Officer.

members before submission of the report to Informal CAB.	
<b>Dates considered by Officer Internal Boards</b> [This can include internal Cabinet and Officer Groups]	
<b>Date considered by Council Leadership Team</b> Politically sensitive strategic key decisions would need to be considered by .] Please contact Ben Hunt on x1164 if you have any queries about which meeting your report should be considered at. Meetings table place on a Thursday morning	N/A
<b>Date considered by informal Cabinet</b> [Politically sensitive strategic key decisions would need consideration at CAB – Please contact Felicity Foley with any queries about Informal CAB.]	N/A
Please consider if a wider briefing on this key decision is required at <b>Labour Group / Liberal Democrat Group meetings?</b> When?	Not a key decision
Is the decision compliant with the <b>Council's Budget and Policy Framework as</b> set out in Part Four Section E of the Constitution?	

**Report for:** Cabinet/Lead Member Signing – Cllr Adam Jogee

**Title:** Dovecote Avenue Gates Public Space Protection Order – Noel Park Ward

**Report authorised by:** Barrie Francis, Director of Environment and Residents Experience

**Lead Officer:** Eubert Malcolm, Assistant Director for Stronger & Safer Communities

**Ward(s) affected:** Noel Park Ward

**Report for Key/Non-Key Decision:** Non-Key Decision

**1. Describe the issue under consideration**

1.1 On 26<sup>th</sup> June 2023, the Lead Member for Community Safety and Cohesion gave approval to consult on the draft Public Space Protection Order (PSPO), in respect of installing gates in Dovecote Avenue that would restrict entry and anti-social behaviour. The purpose of this report is to present the outcome of the PSPO consultation and to seek the Lead Member’s approval for the proposed PSPO.

**2. Recommendations**

2.1 That the Cabinet Member for Community Safety and Cohesion,  
  
Approve the draft Public Space Protection Order (PSPO) as contained in Appendix 1.

**3. Reasons for decision**

3.1 Over the years, the Dovecote Avenue has attracted significant ASB, including numerous reports of fly tipping, graffiti, drug dealing, drug taking, street drinking, discarded beer cans, drugs paraphernalia, urine, and faeces (see appendix 2). There is CCTV in the alley, however, due to the poor lighting and the bends, the alley has various hidden and blind spots. The residents are afforded no protection as they enter a dark and enclosed alleyway to make their way to their front door.

3.2 The activity in Dovecote Avenue, as detailed in Appendix 2, have had or is likely that they will have, a detrimental effect on the quality of life of those in the locality, It is likely that the detrimental effect will be persistent, and such as to make the activities unreasonable; the effect or likely effect is such as to justify the restrictions imposed by the proposed PSPO.

- 3.3 A number of other alleyways within Noel Park ward, were gated with restricted access, in 2022, through the Safer Streets initiative. These alleyways had similar ASB issues as Dovecote Avenue, gating these alleyways has proven successful in significantly reducing ASB and crime in the locations. The proposed gates for Dovecote Avenue will have similar secure by design structure, compliant with required health and safety and fire regulations.
- 3.4 The PSPO will allow two (2) gates to be installed which will restrict access to only those residing or operating a legitimate business at the location. Other legitimate services and contractors will be provided the access through a key pad access code. A Gerda key box will be provided for Emergency Services to access which contain key pad access code. These restrictions will enhance the prevention of crimes and ASB at the location. The alley is not heavily used by pedestrians as a cut through, so gating it will not create access problems for pedestrians and the general public but will increase the security and safety of those residents living at this location. Restricting access will create a cleaner and safer environment, where business owners and residents feel more secure in their properties.
- 3.5 The Council and the Police have exhausted other options such as the installation of CCTV, increase in police patrols, issuing ASB warnings, Community Protection Warnings, Community Protection Notices and Fixed Penalty Notices, but these actions have not enabled a long-term resolution to the anti-social behaviour (ASB) issues. These behaviours are having a detrimental effect on the lives of those living and working in and around Dovecote Avenue. A PSPO will provide a more resilient and robust solution to the problems that residents experience on a daily basis.
- 3.6 On 26<sup>th</sup> June 2023, the Lead Member agreed that the proposal for a gating order (PSPO) to restrict access to Dovecote Avenue should be taken to public consultation. The Consultation process began on the 31<sup>st</sup> July 2023 and continued for 6 weeks ending on 10<sup>th</sup> September 2023.
- 3.7 For the PSPO to be approved the Lead Member must consider the outcome of the consultation and make a decision.

#### **4. Alternative options considered**

- 4.1 Not to pursue a gating order under a PSPO. Given the length of time that the behaviour has been ongoing and the detrimental effect the behaviour is having on the residents and business located in and around Dovecote Avenue, this is not an option.

#### **5. Background Information**

- 5.1 The aim of a PSPO is to stop individuals or groups committing anti-social behaviour in public spaces. Restrictions and requirements can be placed on an area where activities have or are likely to have a detrimental effect on the quality of life of local people, is persistent or continuing in nature and is unreasonable. These can be blanket restrictions or requirements or can be targeted against named behaviours by certain groups at particular times. The guidance is not specific about what can be included in a PSPO.
- 5.2 The potential use of a PSPO is very broad and flexible to allow a Council to cover individual circumstances in its area. A PSPO can cover multiple restrictions so one order could prohibit such activities as the drinking of alcohol and dogs on a lead. The PSPO can cover any publicly accessible space with the Council's area, including an area in private ownership to which the public have access.
- 5.3 The PSPO would allow two (2) gates to be installed in Dovecote Avenue, with a pin code to restrict access to only residents and those operating a legitimate business at the location. The Police have been consulted in respect of this proposal and approved the gates accredited to LPS1175SR2 standard<sup>2</sup>. The current estimate for the gates including the provision of Gerda Box x2 is £26,180.00. Corporate Landlord (Hard Services) have agreed that they will meet the initial costs of the gates, installation and the continued maintenance of the gates.
- 5.4. Enforcement will be shared between the Council and the Police. Breach of a requirement to desist in a particular activity is a criminal offence which can result in a fine of up to £1,000 upon prosecution or they have the opportunity to discharge their liability for prosecution by accepting a Fixed Penalty Notice of £100, which must be paid with 14 days. Enforcement can be undertaken by Council officers, and other groups the Council may designate, but principally Police officers and Police Community Support Officers (PCSOs). The Police will additionally have the power of detention. Any enforcement action undertaken by the Council and/or the Police, will fall within the duties of the ASB and Enforcement Service and Police duties and therefore staff costs will be met from existing budgets.
- 5.5 Consultation was undertaken in accordance with legislative guidelines on 'necessary consultation' as defined in section 72(4) of the Anti-Social Behaviour, Crime and Policing Act 2014. This included consulting with the Police, community representatives and the owners or occupiers of land within the restricted area.

---

<sup>2</sup> LPS 1175 Security Rating LPS 1175 security rating is **awarded by the Loss Prevention Certification Board to products which meet their stringent testing criteria**. It is a standard recognised by Insurance Companies, Local Authorities and Government agencies as well as many other Large Organisations. Designs offer an enhanced level of security for premises requiring a higher level of protection.

## 6.0 Consultation methodology and key outcomes

6.1 The consultation sought the views of those who are or may be affected by this PSPO. The Consultation was open for a period of six weeks and included the following provisions:

- An online public consultation survey was made available on the council website.
- A consultation letter was produced outlining the reasons for the PSPO and its proposed prohibitions. The letter directed residents/business owner/workers/shoppers to the online survey and the ASB Enforcement mailbox.
- The consultation letter was distributed through door- knocking in the affected locality, encouraging residents to participate in the consultation.
- The letter was also hand delivered the letter to local businesses for their information and to display for customers.
- The consultation letter was provided to Sanctuary housing who arranged distribution to their residents.
- Posters giving notice of the proposed PSPO were designed and displayed in key location in the immediate locality to advise on the consultation.
- The ASB Enforcement Team also facilitated two Drop-in sessions for anyone wanting further information , advice or assistance.
  - i. 8 August 2023, 1pm to 3pm: Dovecote Avenue N22 6DH – next to Barclays Bank
  - ii. 10 August 2023, 4pm to 6pm: Rising Green Youth Hub, Unit 2, Lymington Avenue, Wood Green, N22 6JA.

6.2. The consultation questionnaire was brief and simply asked *Do you agree with the Public Spaces Protection Order to restrict access to Dovecote Avenue by erecting gates?*

The questionnaire encouraged respondents to expand on any objections they may have and to provide any further comments. Further comments were made confirming the negative activity having a detrimental impact on the local community *“This area is disgusting and very unsafe.”*. Also, comments supporting the need for the PSPO *“It’s a good thing to control the crime.”* and *“It is vital that this happens”*.

There was a detailed comment relating to the ASB issues in the location particularly around the issue of urination and pigeon droppings creating an unsanitary environment. The same Respondent also asked what measures the Council would put into place, to maintain the cleanliness of the location and public safety. The proposed PSPO will make a significant difference in the cleanliness of the area; with access restricted, this will reduce the likelihood of public urination, vandalism, rubbish dumping and littering in the location. The Council and its partners will continue to meet as a Taskforce<sup>2</sup> to assess and explore

options to address any ongoing ASB issues and activities in and around Dovecote.

- 6.3. There were 11 responses to the consultation, in total. Whilst this is a low number it is reflective of the minimal number of people that the gating order would directly affect, in terms of restricting access. The consultation outcomes can be found at Appendix 3
- 6.4. 100% of respondents were in favour of the PSPO.
- 6.5 Required consultation was also undertaken with the Metropolitan Police Service and they confirmed their support of the PSPO.

**7.0 Contribution to the Corporate Delivery Plan 2022-2024 High level Strategic outcomes’?**

The PSPO contributes to the strategic themes of a Safer borough and Place and economy by helping to maintain clean public spaces that are welcome and safe for residents and visitors to enjoy.

The Haringey Labour Manifesto puts our residents at the heart of what we do, with a priority to protect our residents,

***It is important that we all feel safe on the streets of Haringey and in our homes. That is the minimum requirement for a good society.***

***Living and working in areas where anti-social behaviour is rife can have a devastating effect on communities and individual lives. Every Haringey resident has the right to enjoy their local area in comfort and safety.***

There has already been substantial dialogue with local residents and businesses through the regeneration work undertaken at this location. A Dovecote Avenue Taskforce<sup>3</sup> has been set up to discuss feedback from residents, agree and monitor actions to address ongoing issues and concerns. Progress is provided to the established Residents’ Association.

Gating this location will reduce fly-tipping and other waste issues at the location and improve the cleanliness of the area. This will present a cleaner, accessible and attractive place for residents and also encourage our young people to make use of local facilities.

---

<sup>3</sup> The Dovecote Avenue Task Force is chaired by the ASB & Enforcement Head of Service and attended by officers from a range of services including: Corporate Landlord, LBH Capital Projects & Property, Community Safety, Waste Services, Waste Enforcement, Parking Services, ASB Enforcement, Community Gold, Licensing, Housing Partnerships, Sanctuary Housing, Regeneration Team, MPS (Safer neighbourhood Team) and MPS Designing Out Crime Officer.



The gating of the alleyway will create a cleaner and safer environment which will in turn improve community confidence and reduce the fear of crime.

## **8.0 Carbon and Climate Change**

8.1 There are no direct carbon or climate decisions arising from the consultation or the proposed PSPO.

## **9.0 Statutory Officers comments (Director of Finance including procurement, Head of Legal and Governance, Equalities)**

### **9.1 Finance (including Procurement)**

The recommendation of the report is to install two gates at Dovecote Avenue. The cost of the installation is £0.026m and will be funded from the approved General Fund capital programme (asset Management of Council Buildings). The ongoing maintenance will be borne by the corporate landlord budget.

### **9.2 Legal & Governance**

9.2.1 The Head of Legal and Governance has been consulted in the preparation of this report and comments as follows.

9.2.2 Section 59 of the Anti-social Behaviour, Crime and Policing Act 2014 ("the Act") enables the Council to make a Public Spaces Protection Order (PSPO) if satisfied on reasonable grounds that:

- Activities carried on in a public place within the Borough either have had or it is likely that they will have, a detrimental effect on the quality of life of those in the locality.
- It is likely that the detrimental effect will be persistent, and such as to make the activities unreasonable;
- The effect or likely effect is such as to justify the restrictions imposed by the proposed PSPO.

9.2.3 Before making a PSPO that restricts a public right of way, section 64 (1) of the Act requires the Council to consider (i) the likely effect of making the order on the occupiers of premises adjoining of adjacent to the highway (ii) where the highway constitutes a through route, the likely effect of making the order on other persons in the locality (iii) the availability of a reasonably convenient alternative route.

9.2.4 The PSPO may authorise the installation, operation and maintenance of barriers for enforcing the restriction on the public right of way, but the highway does not legally cease to be regarded as highway by reason of the restriction and barriers.



- 9.2.5 The Council must comply with the consultation requirements in section 64(2) of the Act by (i) notifying potentially affected persons of the proposed order, informing those persons how they can see a copy of the proposed order, notifying those persons of the period within which they can make representations and considering any representations made. In addition, in accordance with section 72(3) of the Act, the Police and whatever community representatives the authority thinks it appropriate, must be consulted. The PSPO consultation has complied with these requirements.
- 9.2.6 Regarding consultation itself, in accordance with the so called “Sedley Principles” it has to be at a time when proposals are still at a formative stage. The Council has to give sufficient reasons for any proposal to permit an intelligent consideration and response, adequate time has to be given for consideration and response, and finally, the product of consultation has to be conscientiously taken into account in the light of administrative law principles and the relevant statutory powers.
- 9.2.7 The consultation exercise complied with the Sedley principles and the Lead Member must now take the consultation responses into account in considering the recommendation in this report.
- 9.2.8 The public spaces protection order may not have effect for a period of more than 3 years, unless extended under section 60 of the Act.
- 9.2.9 Once it has been made the Council must also publish the PSPO in accordance with The Anti-social Behaviour, Crime and Policing Act 2014 (Publication of Public Spaces Protection Orders) Regulations 2014.
- 9.2.10 The PSPO is enforceable by a police officer, police community support officer, and council officers, and a breach of the PSPO will be a criminal offence that can be dealt with through the issuing of a Fixed Penalty Notice or a fine.

### 9.3 **Equality**

The council has a Public Sector Equality Duty (PSED) under the Equality Act (2010) to have due regard to the need to:

- Eliminate discrimination, harassment and victimisation and any other conduct prohibited under the Act
- Advance equality of opportunity between people who share protected characteristics and people who do not
- Foster good relations between people who share those characteristics and people who do not

The three parts of the duty apply to the following protected characteristics: age, disability, gender reassignment, pregnancy/maternity, race, religion/faith, sex and sexual orientation. Marriage and civil partnership status applies to the first part of the duty.

Although it is not enforced in legislation as a protected characteristic, Haringey Council treats socioeconomic status as a local protected characteristic.

The government guidance on PSPO states that the restrictions of a PSPO can be blanket restrictions or requirements or can be targeted against certain behaviours by certain groups at certain times. The PSPO proposed, targets certain behaviours in Dovecote Avenue by restricting access to this area through the installation of gates. Overall, groups with protected characteristics will be positively impacted by the proposal which aims to assist the council in tackling anti-social behaviour and to improve cleanliness.

The introduction of a PSPO in the locality of Dovecote Avenue has the potential to have a positive impact on the Council's duty under the Equality Act 2010, to foster good relations between communities. It will tackle the antisocial behaviour which has the potential to create tensions between different communities.

The PSPO will apply to all individuals committing antisocial behaviour within the designated area, without discrimination. We do not anticipate any negative impacts on any groups with protected characteristics, as evidenced from the consultation responses. However, the council will seek to consider and mitigate any negative impact raised after the implementation by the PSPO by persons with protected characteristics.

## **14 Use of Appendices**

- Appendix 1 – Draft PSPO
- Appendix 2 – Evidence base
- Appendix 3 – Consultation Report
- Appendix 4 - Equality Impact Assessment Screening Tool

## **15 Local Government (Access to Information) Act 1985**

Not applicable.

**APPENDIX 1**

**Draft**

**Dovecote Avenue**

**Public Spaces Protection Order**

ANTI-SOCIAL BEHAVIOUR, CRIME AND POLICING ACT 2014

PART 4, SECTION 59

PUBLIC SPACES PROTECTION ORDER

Notice is hereby given that the London Borough of Haringey exercise of its powers under Section 59, 60, 64 and 72 of the Antisocial Behaviour, Crime and Policing Act 2014 ("the Act") hereby makes the following Order:-

**The London Borough of Haringey**

**Dovecote Avenue Public Spaces Protection Order**

1. The Order shall come into operation on (to be determine) 2023 and shall have effect for a period of 3 years thereafter, unless extended by further orders under Haringey Council's (hereafter 'the Council') statutory powers.
2. The Order relates to the Dovecote Avenue as shown on the attached plan.
3. The Order will restrict by erecting gates, the use of the public right of way in Dovecote Avenue as depicted in 'Red' in the attached plan. Restricted access will apply at all times and to all persons, except for those persons listed below.
  - a) Owners or occupiers of premises adjacent to or adjoining the highway affected by this order and who have been provided with the access code by the Council.
  - b) Employees providing service and delivery to the person specified in (a)
  - c) Fire brigade, police or NHS Trust/Foundation staff when in the exercise of their duties.
  - d) Employees, contractors or agents of statutory undertakers in relation to gas, electricity or water or telecommunications apparatus as defined in the Telecommunications Act 1994 situated in the relevant highway in connection with the laying, erecting, inspection, maintenance, alteration, repair, renewal or removal of any relevant apparatus.
  - e) Council staff and authorised contractors when in the exercise of their duties.
  - f) Persons using the highway with the permission of on the direction of a duly authorised Council Officer in this regard.
4. The alternative route for residents and other members of the public High Road N22 and will be along the High Road N22
5. Responsibility for the maintenance of the gate will lie with the Council and the details of the responsible department are: London Borough of Haringey Corporate Landlord (Hard Services) [Corporate.landlord@haringey.gov.uk](mailto:Corporate.landlord@haringey.gov.uk)

6. Any person, other than those persons listed in Paragraph 3 above, who is found entering the restricted area as detailed in the attached plan will be in breach of the order and liable to a fine or penalty as detailed in section 10 below.
7. The Council is satisfied that the conditions set out in Sections 59, 64 and 72 of the Act have been met, and that it is, in all the circumstances, expedient to make this order. The order is required to reduce the detrimental effect of crime and anti-social behaviour in the Restricted Area, which has had a detrimental effect on the quality of life of those in the locality and to reduce the risk of this reoccurring. The effect or likely effect of the anti-social behaviour and crime in the Restricted Area is of a persistent or continuing nature such as to make it unreasonable, and justifies the restrictions imposed by this Order.
8. If any interested person desires to question the validity of this Order on the grounds that the Council had no power to make it or that any requirement of the Act has not been complied with in relation to this Order, he or she may apply to the High Court within 6 weeks from the date on which this Order is made.
9. A person is guilty of an offence under section 67 of the Act if they breach the . restrictions of this public spaces protection order by entering the area referred to above. A person guilty of an offence under section 67 of the Act is liable on summary conviction to a fine not exceeding level 3 on the standard scale.
10. A constable or an authorised person may issue a fixed penalty notice to anyone he or she has reason to believe has committed an offence under section 67 of the Act in relation to a public spaces protection order by entering the area referred to above. Where a person is issued with a notice under this section in respect of an offence
  - a) An amount specified under subsection (5) (c) is £100 payable to London Borough of Haringey.
  - b) No proceedings may be taken for the offence before the end of the period of 14 days following the date of the notice.
  - c) The person may not be convicted of the offence if the person pays the fixed penalty before the end of that period.
  - d) If the fixed penalty is not paid before the end of the period referred to above they may be prosecuted as referred to in paragraph 9 above. A copy of the Order and map may be obtained by contacting ASB Enforcement team 0208 489 1000. Alternatively, the Order can be seen at [www.haringey.gov.uk](http://www.haringey.gov.uk)

Date: \_\_\_\_\_

2016

Dovecote Avenue Map of restricted area – delineated in RED





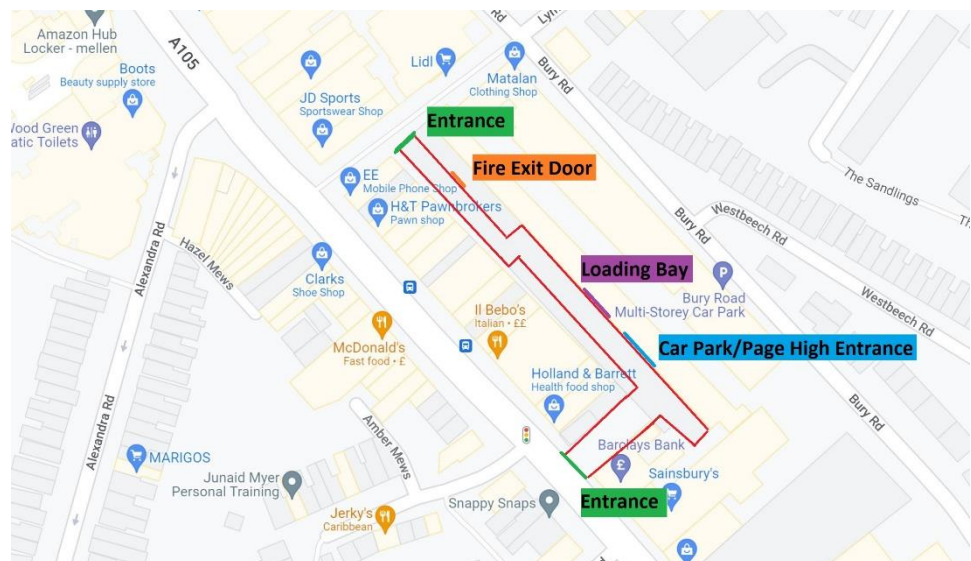
### Dovecote Avenue Evidence Base

Dovecote Avenue (also known as Dovecote Alleyway, Dovecote Alley or ‘alley/alleyway’) is a passageway from the High Road to Lymington Avenue, N22. The alley also leads to Page High (a Social Housing rooftop village), Bury Road Car Park (a multi-storey public car park) and a Service Yard/Loading Bay used by local businesses.



Page High consists of 92 residential homes. In addition, there are 25 commercial businesses who have access to the alley, as well as 20 residential homes who access their property via the alley only.

Due to the shape and size of the alleyway, it is difficult for residents or members of the public to see into the alley due to the alley bending in an L and a T shape.



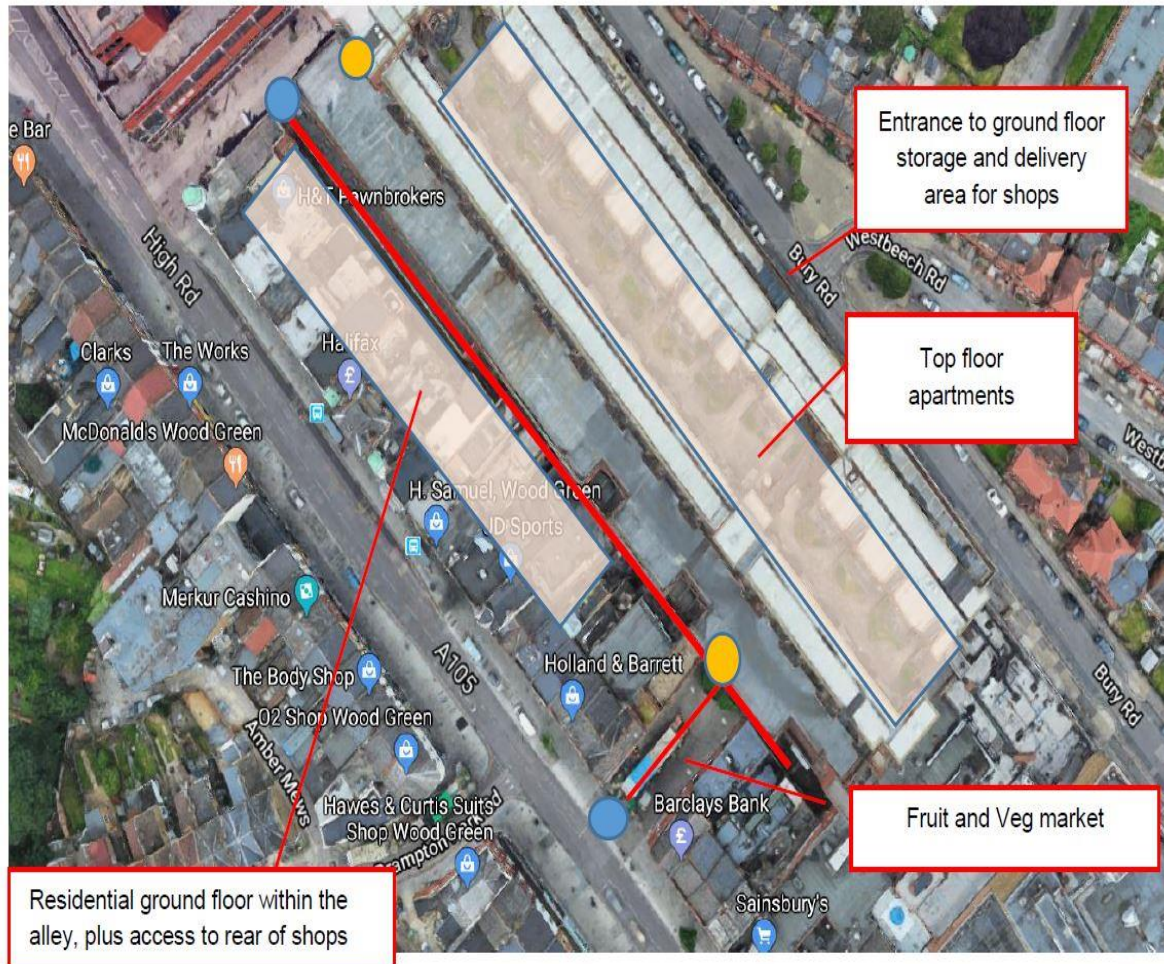


Dovecote Avenue leading to the Bury Road building which incorporates ground floor storage for retail outlets and greengrocers market stall, car parking and residential unit's top floor and ground floor in the alleyway.

**Excessive Permeability –**

Red line indicates the pedestrian route

Orange dot indicates residential and parking entrance

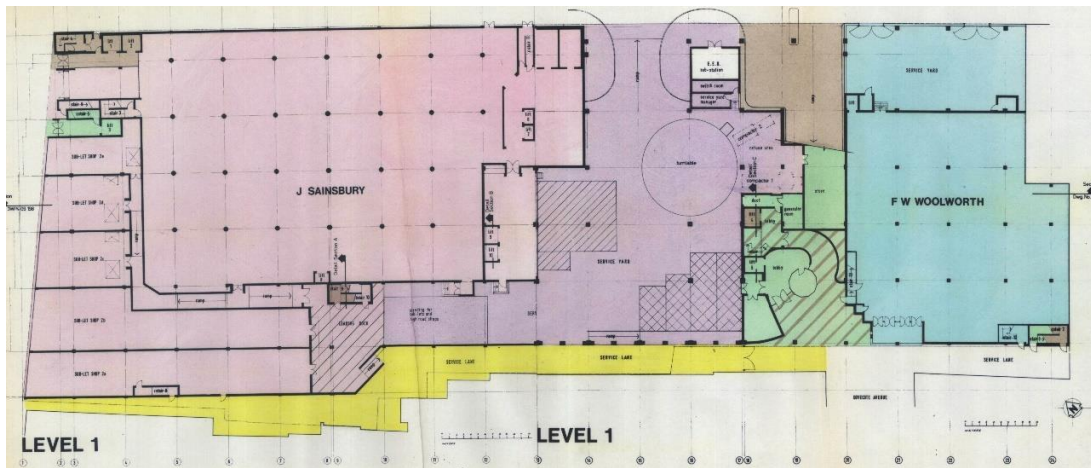


There are several entrances in and out of this area, which include

- Trades entrance at rear on bury road
- Car park vehicle entrance on Bury road
- Pedestrian (parking) and Residential entrance on Bury road injunction with Lymington Avenue
- Pedestrian ( parking ) and residential entrance off Dovecote avenue
- Trades entrance off Dovecote Avenue
- Fire exit from upper residential units off Dovecote Avenue

It is important to note that each of these entrances serve multiple functions that vary according to the time of day and all of the entrances allow unfettered access throughout the core of the building and area. The only location that has any form of compartmentation and access control is the upper floor residents, but they still have to run the gauntlet of the car park to get to their communal front door within the fabric of the building.





Yellow - Alleyway running behind businesses facing the High Road.



The above pictures show the entrance to the alley from Lymington Avenue.



The above pictures show the entrance to the alley from High Road. This entrance also leads to Bury Road car park and Page High.





Shutters on the right leading to Loading Bay



Gates on the right leading to residential properties

Over the years, the alley has attracted anti-social behaviour (ASB) including numerous reports of flytipping, graffiti, drug dealing, drug taking, street drinking, discarded beer cans, drugs paraphernalia, urine and faeces. There is CCTV in the alley, however, due to the poor lighting and the bends, the alley has various hidden and blind spots. Most members of the public use the High Road entrance to the alley to either shop from the food stall, or to enter the car park or Page High. It is not common for members of the public to use the alley as a short-cut to Lymington Avenue or High Road. The residents are afforded no protection as they enter a dark and enclosed alleyway to make their way to their front door.



These pictures show that the alley has been a hot spot for ASB. There are consistent incidents of littering and flytipping. The picture on the right was taken in October 2022 which shows a fire was lit to the rubbish in front of a residential property.





During a walkabout, which took place on 04 July 2022, officers from the council have witnessed:

- Significant amounts of fly tipped waste
- A drug-user in a stairwell, evidently waiting for a dealer to appear and in withdrawal
- Urination in stairwells and other areas
- Evidence of a break-in through a fire escape from Dovecote Alley into what is now a building used by a church.

Residents had also shared incidents of robberies, burglaries, threatening behaviour and drug abuse.





It is important to note that Rising Green Youth Hub has opened on 01 August 2022 which is only one shop away from the alley on Lymington Avenue.

A second walkabout took place on 06 July 2022 which involved council staff and residents. Residents raised concerns about levels of antisocial behaviour that is currently taking place in the area close to the Rising Green Youth Hub. Dovecote Avenue and Bury Road car park were of particular concern.

Residents said that there are access points to car park that do not get locked at night and that when they are locked, people break them.



The following concerns were raised during the walkabout:

- The shutter to the Loading Bay was broken and had been damaged
- Evidence of large volumes of litter at the rear of the properties in the alley which was not household waste
- Dumping of waste, littering and urination were frequent
- Alley is dark and streetlights do not work
- As the alley is not straight, it allows people to 'hide' around the curves and bends due to poor visibility
- People are using the alley to enter the car park building, which then has access into Page High also. They obtain access via the fire exit doors in the alley
- The above access results in ASB including drug use, drug dealing and urination in the closed car park and allows for easier access to the Page High estate.







A third walkabout took place on 08 September 2022 which involved Council staff and Police.

Officers witnessed the following:

- Evidence of flytipping/dumping of household waste around authorised commercial bins the alley (pictured above). The bags were different from those authorised for collection.
- A very strong smell of urination was present at the entrances to the alley
- Multiple marks on the doors to the car park as a result on attempting to pry doors open
- A highly intoxicated male drinking alcohol and sitting on the floor in the alley. He would not be visible to anyone from the Lymington Avenue end of the alley



These pictures show a snapshot of flytipping in the alley over the years.

Picture 1 – July 2020

Picture 2 – May 2021

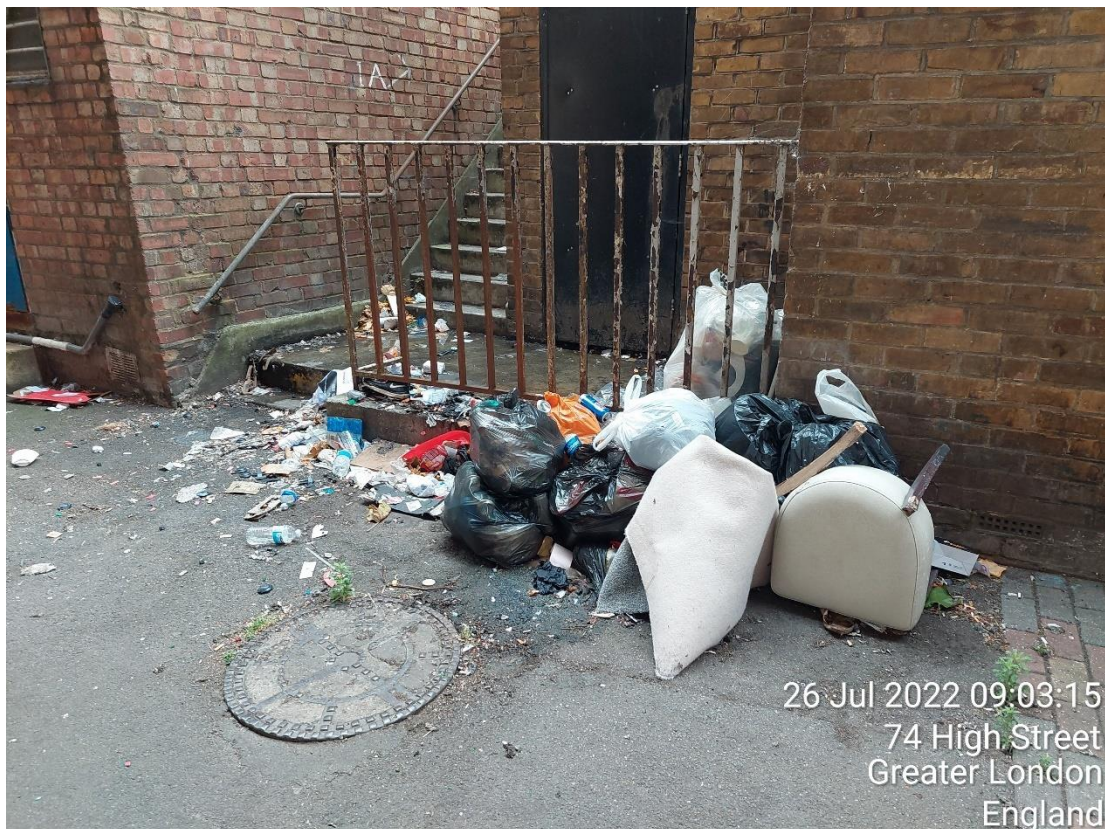
Picture 3 – July 2022.



Picture 1

Picture 3

Picture 2





A fourth walkabout took place on 29 October 2022 which involved Council staff. Officers witnessed the following:

- Flytipping along the alley - outside the entrances of the residential properties
- Shutters opened to the Loading Bay allowing anyone access to the building
- Strong smell of urination along the alleyway

The consistent flytipping, urination, littering and loitering of people makes Dovecote Avenue very unpleasant and an unattractive place to live, to pass by, or to use for commercial purposes.

In addition, due to poor street lighting, the dark alley promotes the fear of crime, making the residents and passers-by very vulnerable to crime. As the alley is often poorly kept, it attracts drinking, drugs and flytipping. The passers-by and the residents see this or pass the perpetrators and experience the issues first hand. The crime that occurs in the alley often goes unreported and becomes the “norm”. Issues such as urination, flytipping and drugs taking can easily be hidden from the main street.

Residents have also tweeted about the persistent flytipping in the alley.





The following figures are from August 2021 to July 2022.

The incident location is often provided or recorded as High Road, Lymington Avenue or Bury Road. The alley is also reported or recorded as Dovecote Avenue or Dovecote Alleyway on the databases. Therefore, the figures are for the areas which are in close vicinity of the alley.

There have been **29 complaints of flytipping** in the area surrounding the alley.

**6 Section 47 Notices** (Environmental Protection Act 1990) have been issued in the vicinity of Dovecote Avenue

Veolia (waste services) has received 30 flytipping reports in the vicinity and have conducted **145 flytipping collections**.

Crime Type	Reports
Anti-social behaviour	8
Burglary	2
Criminal damage and arson	2
Drugs	1
Other theft	2
Public order	1
Theft from the person	2
Vehicle crime	4
Violence and sexual offences	6
<b>Total</b>	<b>28</b>

#### **Lymington Avenue**

From August 2021 to July 2022 there has been **19 FPNs** issued by enforcement officers. 17 FPNs were issued for unlawfully depositing of household waste and commercial waste items that including building waste, garden waste, general waste, and furniture. 2 FPNs were for a business failing to provide how they dispose of their waste and for a resident placing a fish tank on the public highway.

#### **Dovecote Avenue**

There was **1 FPN** issued to a business owner for failing to contain their waste correctly and **2 FPNs** issued for depositing cigarette end on the public highway

A Community Protection Notice was issued to a resident requesting them to remove their waste from the location.

#### **Bury Road**

**7 complaints** were made to the council which included reports of flytipping in and around Bury Road car and reports of graffiti.

This page is intentionally left blank

## **DOVECOTE AVENUE PSPO - Consultation Report**

### **On line questionnaire FORM**

1. Do you agree with the Public Spaces Protection Order to restrict access to Dovecote Avenue by erecting gates?

- Yes
- No
- No preference

---

2. If you answered no, what are your objections to the Order.

Enter your answer

---

3. Do you have any other comments about the proposed PSPO

Enter your answer

---

4. Are you a

- Resident
- Business
- Other

---

5. What is your postcode?

Enter your answer

## Consultation Responses

1. Do you agree with the Public Spaces Protection Order to restrict access to Dovecote Avenue by erecting gates?

[More Details](#)

● Yes	11
● No	0
● No preference	0



2. If you answered no, what are your objections to the Order.

0  
Responses

Latest Responses

3. Do you have any other comments about the proposed PSPO

[More Details](#)

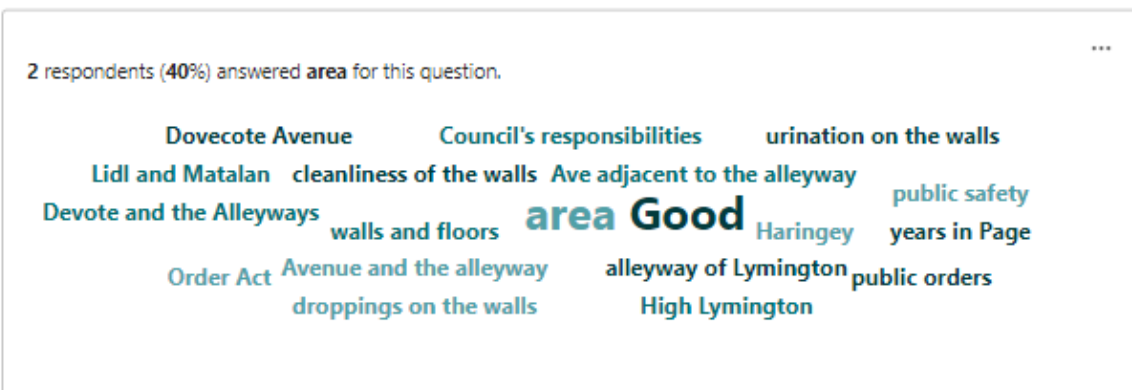
[Insights](#)

5  
Responses

Latest Responses

"It's a good thing to control the crime"

"This area is disgusting and very unsafe"



### Response details

Anonymous

*Thank you very much I appreciate it, I live in page high and was attacked by 3 drugs people which they have link with 2 drug dealer in page high but they broke my knee nose and mugged me and there was no any cctv so police closed the case.*

Anonymous

*It is vital that this happens.*

Anonymous

*Dear Haringey Council, I have lived in Haringey for 60 years and 35 years in Page High Lymington Ave. I have noticed over the last 10 years the following:*

- *Myself and my family have witnessed the increase of urination on the walls, and floors around Dovecote Avenue and the alleyway, adjacent to the alleyway of Lymington Ave outside the Lidl and Matalan shopping area.*
- *The infectious stained dried pigeon droppings on the walls and floors are still visible and have not been removed.*
- *The increase of Pigeon Droppings on the walls, floors, and lamp lights. Although the Protection Order (PSPO) makes comments about the problems, such as faeces, excrement, however, no mention of public urination peeing on the walls and floors In addition, it does not stipulate anything about Haringey Council will maintain the standard of cleaning to prevent this from reoccurring. The state of uncleanliness of the building increased over the years and moreover worse because Haringey Council seriously neglected and failed to provide street cleaning to the Devote and the Alleyways leading to Lymington Ave. Furthermore, other areas such as the Muswell Hill area are well kept clean, why this is not the same for Dovecote Avenue and the alleyway, adjacent to the alleyway of Lymington Ave outside the Lidl and Matalan. Good example: Environmental Health & Safety Sanitary Cleaning*
- *What measures are going to be enforced to ensure Haringey Council maintains the cleanliness of Dovecote Avenue adjacent to Lymington Ave*
- *What will Haringey Council do to ensure the maintenance of the sanitary conditions and the cleanliness of the walls of the Dovecote Avenue/Alleyway Lymington Ave?*
- *How do you intend to control men/or any person urinating on the building, walls, and floor.*
- *The pigeon droppings on the lamp lights, walls, and floors?*
- *What solution does Haringey Council intend to put in place?*
- *What reassurance public orders you will use for the public? Good example: Public Order Act 7 People will be fined under the Public Order Act if caught urinating in public (or even punished for indecent exposure, under the Sexual Offences Act of 2003.*
- *What are Haringey Council's responsibilities, the Law, and measures that will be enforced?*
- *What are your enforcement orders?*
- *What is your reassurance to the local residents and public safety?*
- *Equalities to all area I would like to see some stipulation of enforcement, as Haringey Council has neglected and failed to maintain a good standard of cleanliness around that area for years, hence why it has built up and manifested in such appalling neglected, unhealthy sate and conditions.*

Anonymous

*This area is disgusting and very unsafe.*

Anonymous

*It's a good thing to control the crime.*

5. What is your postcode?

[More Details](#)

[Insights](#)

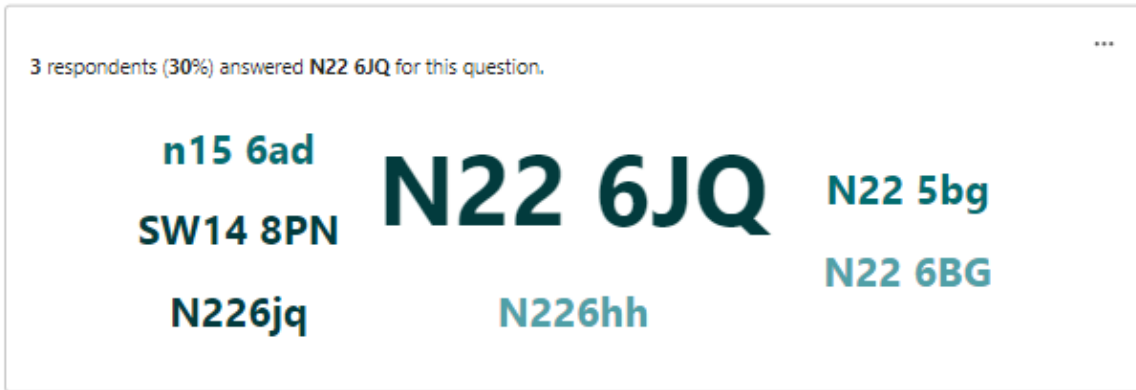
10  
Responses

Latest Responses

"N22 6JQ"

"N22 6BG"

"n22"



6. We want to understand as much as we can about the potential equality impact of any changes to recycling and waste services on residents who share protected characteristics (for example, sex, disability, age or ethnicity). Please tell us if you think there things that we should or should not consider in the future, with equalities considerations in mind. These questions are optional

[More Details](#)

4  
Responses

Latest Responses

"N/A"

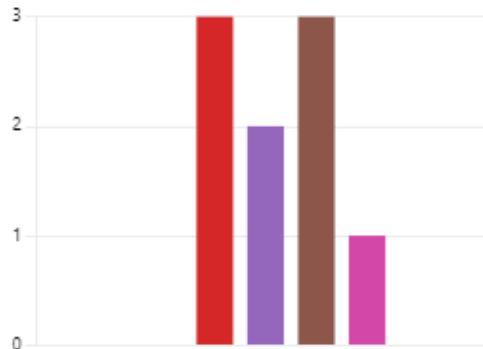
ID ↑	Name	Responses
1	anonymous	More cctv please
2	anonymous	N/A
3	anonymous	all areas should be cleaned and treated equally
4	anonymous	N/A



7. **Age** Which age group applies to you?

[More Details](#)

● Under 17	0
● 17-21	0
● 22-29	0
● 30-39	3
● 40-49	2
● 50-59	3
● 60-74	1
● 75+	0
● Prefer not to say	0



8. **Sex** What best describes your sex?

[More Details](#)

[Insights](#)

● Male	3
● Female	6
● Prefer not to say	0
● Other	0



9. **Trans**

Trans is an umbrella term to describe people whose gender identity is not the same as, or does not sit comfortably with, the sex they were assigned at birth.

Do you consider yourself to be trans?

[More Details](#)

[Insights](#)

● Yes	1
● No	6
● Prefer not to say	1



10. **Disability**

Under the Equality Act 2010, a person is considered to have a disability if she/he has a physical or mental impairment which has a substantial and long-term adverse effect on her/his ability to carry out normal day-to-day activities.

Are you disabled?

[More Details](#)

[Insights](#)

● Yes	2
● No	6
● Prefer not to say	1



11. **Ethnicity** *What best describes your ethnic group?*

[More Details](#)

● Asian or Asian British - Banglad...	0
● Asian or Asian British - Chinese	0
● Asian or Asian British - Indian	0
● Asian or Asian British - Pakistani	1
● Asian or Asian British - Any othe...	0
● Black, Black British, Caribbean or...	0
● Black, Black British, Caribbean or...	0
● Black, Black British, Caribbean or...	2
● Mixed or multiple ethnic groups...	0
● Mixed or multiple ethnic groups...	0
● Mixed or multiple ethnic groups...	1
● Mixed or multiple ethnic groups...	0
● Other - Arab	0
● Other - Kurdish	0
● Other - Turkish	0
● Other - Any other ethnic backgr...	0
● White - English/Welsh/Scottish/...	0
● White - Irish	0
● White - Gypsy or Irish Traveller	0
● White - Roma	0
● White - Any other White backgr...	1
● Prefer not to say	1
● Prefer to self describe (please e...	0

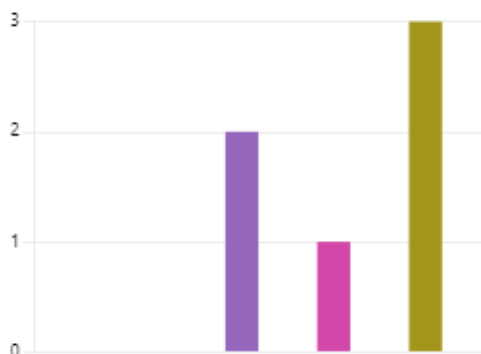


12. **Disability** *Which of the following impairment groups apply to you?*

You may tick more than one box.

[More Details](#)

● Visual Impairment	0
● Physical Impairment	0
● Deaf / British Sign Language User	0
● Hearing impairment	0
● Mental health / mental distress i...	2
● Learning difficulties	0
● Neurodiverse	1
● Long term health condition / hi...	0
● Prefer not to say	3
● Other	0



13. **National Identity** *How would you describe your national identity?*

You may tick more than one box.

[More Details](#)

<input type="checkbox"/>	Afghan	0
<input type="checkbox"/>	Australian	0
<input type="checkbox"/>	Bangladeshi	0
<input checked="" type="checkbox"/>	British	6
<input type="checkbox"/>	Bulgarian	0
<input type="checkbox"/>	Chilean	0
<input type="checkbox"/>	Chinese	0
<input type="checkbox"/>	Colombian	0
<input type="checkbox"/>	Cypriot	0
<input type="checkbox"/>	Ecuadorian	0
<input type="checkbox"/>	English	1
<input type="checkbox"/>	Eritrean	0
<input type="checkbox"/>	French	0
<input type="checkbox"/>	German	0
<input type="checkbox"/>	Ghanaian	0
<input type="checkbox"/>	Hungarian	0
<input type="checkbox"/>	Irish	0
<input type="checkbox"/>	Italian	0
<input type="checkbox"/>	Indian	0
<input type="checkbox"/>	Jamaican	0
<input type="checkbox"/>	Kosovan	0
<input type="checkbox"/>	Lithuanian	0
<input type="checkbox"/>	Northern Irish	0
<input type="checkbox"/>	Polish	0
<input type="checkbox"/>	Romanian	0
<input type="checkbox"/>	Scottish	0
<input type="checkbox"/>	Spanish	0
<input type="checkbox"/>	Somali	0
<input type="checkbox"/>	Turkish	0
<input type="checkbox"/>	United States	0
<input type="checkbox"/>	Welsh	0
<input type="checkbox"/>	Other	2



14. **Please enter how you self-describe your ethnicity:**

[More Details](#)

3  
Responses

Latest Responses  
"N/A"

14. Please enter how you self-describe your ethnicity:

3 Responses

ID ↑	Name	Responses
1	anonymous	Asian
2	anonymous	prefer not to
3	anonymous	N/A

15. **Language** *What is your preferred language?*

You may tick more than one box.

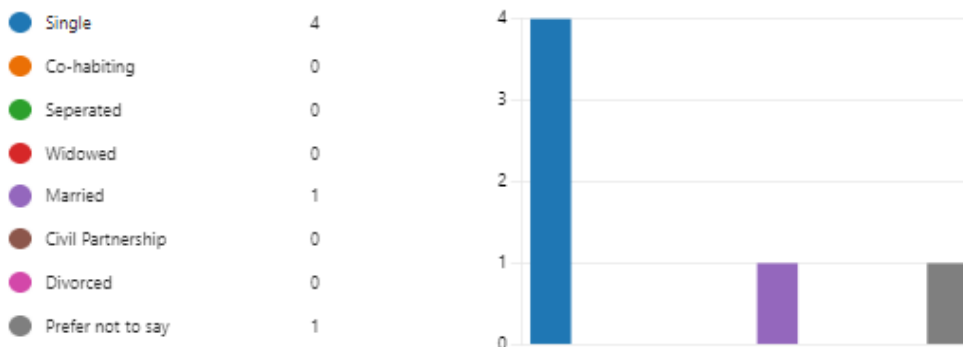
[More Details](#)

<input type="checkbox"/> Albanian	0
<input type="checkbox"/> Akan	0
<input type="checkbox"/> Arabic	0
<input type="checkbox"/> Bengali	0
<input type="checkbox"/> Bulgarian	0
<input type="checkbox"/> BSL User	0
<input type="checkbox"/> Chinese	0
<input type="checkbox"/> English	8
<input type="checkbox"/> French	0
<input type="checkbox"/> German	0
<input type="checkbox"/> Greek	0
<input type="checkbox"/> Gujarati	0
<input type="checkbox"/> Hungarian	0
<input type="checkbox"/> Italian	0
<input type="checkbox"/> Japanese	0
<input type="checkbox"/> Kurdish	0
<input type="checkbox"/> Lithuanian	0
<input type="checkbox"/> Persian / Farsi	0
<input type="checkbox"/> Polish	0
<input type="checkbox"/> Portuguese	0
<input type="checkbox"/> Romanian	0
<input type="checkbox"/> Russian	0
<input type="checkbox"/> Somali	0
<input type="checkbox"/> Spanish	0
<input type="checkbox"/> Tagalog / Filipino	0
<input type="checkbox"/> Turkish	0
<input type="checkbox"/> Urdu	1
<input type="checkbox"/> Yiddish	0
<input type="checkbox"/> Other	1



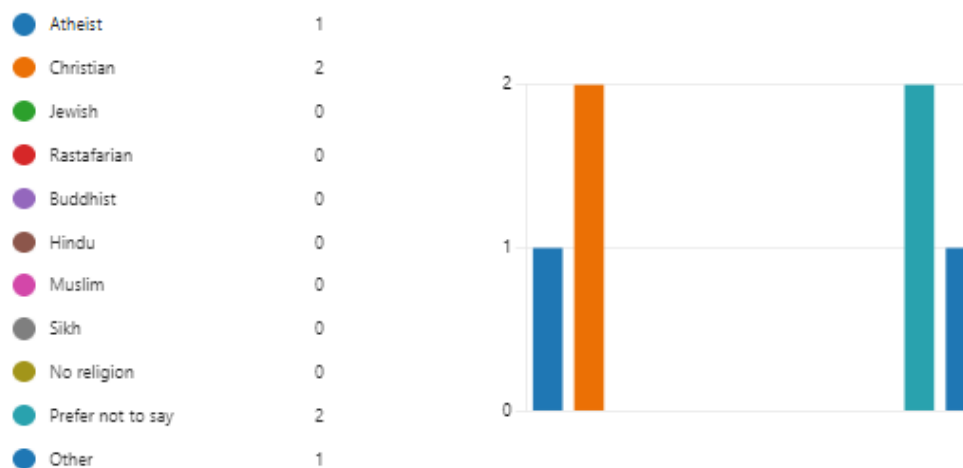
16. **Marriage and Civil Partnership** (Please tick the box that best describes you)

[More Details](#)



17. **Religion or belief** - How do you describe your religion or belief

[More Details](#)



17. Religion or belief - How do you describe your religion or belief

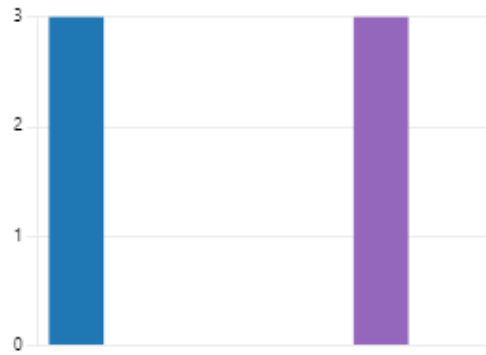
6 Responses

ID ↑	Name	Responses
1	anonymous	Atheist
2	anonymous	Prefer not to say
3	anonymous	free spirited
4	anonymous	Christian
5	anonymous	Prefer not to say
6	anonymous	Christian

18. What is your sexual orientation

[More Details](#)

<span style="color: blue;">●</span> Heterosexual	3
<span style="color: orange;">●</span> Bi	0
<span style="color: green;">●</span> Gay	0
<span style="color: red;">●</span> Lesbian	0
<span style="color: purple;">●</span> Prefer not to say	3
<span style="color: brown;">●</span> Other	0



19. Are you pregnant?

[More Details](#)

[Insights](#)

<span style="color: blue;">●</span> Yes	0
<span style="color: orange;">●</span> No	5
<span style="color: green;">●</span> No, but I have had a baby in the...	0
<span style="color: red;">●</span> Prefer not to say	1





**Equality Impact Assessment Screening Tool**

1	Lead officer contact details: SALMAN AZIZ/JAMAINE BROWN			
2	Date:			
3	Summary of the proposal: PSPO to enable the gating of Dovecote Avenue			
	<b>Response to Screening Questions</b>	<b>Yes</b>	<b>No</b>	<b>Please explain your answer.</b>
<b>a) Type of proposal</b>				
4.	Is this a new proposal or a significant change to a policy or service, including commissioned service?		✓	<b>The proposal is for approval to consult on the implementation of a Public Spaces Protection Order to enable the council to gate a public right of access where there has been anti-social behaviour and nuisance. There are no policy or service or impact on staffing arrangements</b>
5.	Does the proposal remove, reduce or alter a service or policy?		✓	
6.	Will there be a restructure or significant changes in staffing arrangements? Please see the restructure pages for guidance for <a href="#">restructure EqlAs</a> .		✓	
7.	If the service or policy is not changing, have there been any known equality issues or concerns with current provision. For example, cases of discrimination or failure to tackle inequalities in outcomes in the past?		✓	
<b>b) Known inequalities</b>				
8.	Could the proposal disproportionately impact on any particular communities, disadvantaged or vulnerable residents?		✓	<b>The area to be gated is a public right of way, however it is not generally used by the public as a short cut to access any provision. The area is however subject to significant fly tipping and</b>

9.	<p>Is the service targeted towards particular disadvantaged or vulnerable residents?</p> <p><i>This can be a service specifically for a group, such as services for people with Learning Disabilities. It can also be a universal service but has specific measures to tackle inequalities, such as encouraging men to take up substance misuse services.</i></p>		✓	<p><b>loitering with nuisance, which present an unsafe environment for residents in particular. Residents and businesses requiring access will be given access, as the gate will be fitted with a key pad entry lock, which will be provided to legitimate residents and businesses.</b></p>
10.	<p>Are there any known inequalities? For example, particular groups are not currently accessing services that they need or are more likely to suffer inequalities in outcomes, such as health outcomes.</p>		✓	
11	<p>If you have answered yes to at least one question in both sections a) and b), Please complete an EqIA.</p>			<p>A full EqIA, is not required at this time as</p> <ul style="list-style-type: none"> <li>• <b>The proposal is likely to have no/minimal impact on groups that share the protected characteristics or other disadvantaged groups</b></li> <li>• <b>This proposal is for approval to consult on a proposed PSPO. Should the consultation give rise to any issues of inequality not yet identified then a full EQIA can be completed in advance of seeking approval for the actual PSPO to enable the installation of the gate.</b></li> <li>• <b>The gating of the alley way is likely to have a positive impact on residents living in the locality and staff working in and around the location; in making the area cleaner and safer.</b></li> </ul>